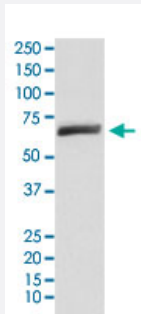


USP22 monoclonal antibody, clone ADCG-21

Catalog # MAB22298 Size 100 uL

Applications



Western Blot (Cell lysate)

Western Blot (cell lysate) analysis of HeLa cell lysate.

Specification

Product Description	Rabbit monoclonal antibody raised against synthetic protein of human USP22.
Immunogen	A synthetic peptide corresponding to human USP22.
Host	Rabbit
Reactivity	Human
Specificity	This antibody reacts with human USP22, in native form and recombinant. Superfamily members of USP22 are not reactive to antibody.
Form	Liquid
Purification	Affinity purification
Isotype	IgG
Recommend Usage	Western Blot (1:500-2000) The optimal working dilution should be determined by the end user.
Storage Buffer	In PBS, 150 mM NaCl, pH 7.4 (50% glycerol, 0.02% sodium azide).

Storage Instruction

Store at 4°C. For long term storage store at -20°C.
Aliquot to avoid repeated freezing and thawing.

Note

This product contains sodium azide: a POISONOUS AND HAZARDOUS SUBSTANCE which should be handled by trained staff only.

Applications

- Western Blot (Cell lysate)

Western Blot (cell lysate) analysis of HeLa cell lysate.

Gene Info — USP22

Entrez GeneID[23326](#)**Protein Accession#**[Q9UPT9](#)**Gene Name**

USP22

Gene Alias

KIAA1063, USP3L

Gene Description

ubiquitin specific peptidase 22

Gene Ontology[Hyperlink](#)**Other Designations**

deubiquitinating enzyme 22|ubiquitin carboxyl-terminal hydrolase 22|ubiquitin specific peptidase 3-like|ubiquitin specific protease 22|ubiquitin thiolesterase 22|ubiquitin-specific processing protease 22