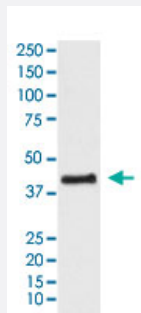


NR2F1 monoclonal antibody, clone ACHO-14

Catalog # MAB22296 Size 100 uL

Applications



Western Blot (Cell lysate)

Western Blot (cell lysate) analysis of HEK293 cell lysate.

Specification

Product Description	Rabbit monoclonal antibody raised against synthetic protein of human NR2F1.
Immunogen	A synthetic peptide corresponding to human NR2F1.
Host	Rabbit
Reactivity	Human, Mouse, Rat
Specificity	This antibody reacts with human, mouse, rat NR2F1, in native form and recombinant. Superfamily members of NR2F1 are not reactive to antibody.
Form	Liquid
Purification	Affinity purification
Isotype	IgG
Recommend Usage	Immunofluorescence (1:50-200) Western Blot (1:500-1000) The optimal working dilution should be determined by the end user.
Storage Buffer	In PBS, 150 mM NaCl, pH 7.4 (50% glycerol, 0.02% sodium azide).

Storage Instruction

Store at -20°C.
Aliquot to avoid repeated freezing and thawing.

Note

This product contains sodium azide: a POISONOUS AND HAZARDOUS SUBSTANCE which should be handled by trained staff only.

Applications

- Western Blot (Cell lysate)

Western Blot (cell lysate) analysis of HEK293 cell lysate.

- Immunofluorescence

Gene Info — NR2F1

Entrez GeneID[7025](#)**Protein Accession#**[P10589](#)**Gene Name**

NR2F1

Gene Alias

COUP-TFI, EAR-3, EAR3, ERBAL3, NR2F2, SVP44, TCFCOUP1, TFCOUP1

Gene Description

nuclear receptor subfamily 2, group F, member 1

Omim ID[132890](#)**Gene Ontology**[Hyperlink](#)**Gene Summary**

group F

Other Designations

transcription factor COUP 1 (chicken ovalbumin upstream promoter 1, v-erb-a homolog-like 3)

Disease

- [Hypertension](#)
- [Pre-Eclampsia](#)
- [Pregnancy Complications](#)