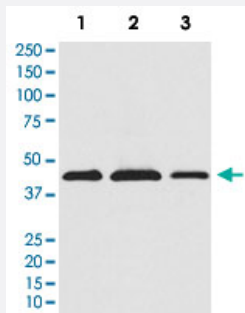


AKT1S1 monoclonal antibody, clone ACHD-1

Catalog # MAB22291 Size 100 uL

Applications



Western Blot

Western Blot analysis of (1) HeLa, (2) RAW 264.7, (3) PC12 cell lysates.

Specification

Product Description	Rabbit monoclonal antibody raised against synthetic protein of human AKT1S1.
Immunogen	A synthetic peptide corresponding to human AKT1S1.
Host	Rabbit
Reactivity	Human, Mouse, Rat
Specificity	This antibody reacts with human, mouse, rat AKT1S1, in native form and recombinant. Superfamily members of AKT1S1 are not reactive to antibody.
Form	Liquid
Purification	Affinity purification
Isotype	IgG
Recommend Usage	Immunoprecipitation (1:50) Western Blot (1:500-2000) The optimal working dilution should be determined by the end user.
Storage Buffer	In PBS, 150 mM NaCl, pH 7.4 (50% glycerol, 0.02% sodium azide).

Storage Instruction

Store at 4°C. For long term storage store at -20°C.
Aliquot to avoid repeated freezing and thawing.

Note

This product contains sodium azide: a POISONOUS AND HAZARDOUS SUBSTANCE which should be handled by trained staff only.

Applications

- Western Blot

Western Blot analysis of (1) HeLa, (2) RAW 264.7, (3) PC12 cell lysates.

- Immunoprecipitation

Gene Info — AKT1S1

Entrez GeneID [84335](#)

Protein Accession# [Q96B36](#)

Gene Name AKT1S1

Gene Alias Lobe, MGC2865, PRAS40

Gene Description AKT1 substrate 1 (proline-rich)

Omim ID [610221](#)

Gene Ontology [Hyperlink](#)

Gene Summary AKT1S1 is a proline-rich substrate of AKT (MIM 164730) that binds 14-3-3 protein (see YWHAH, MIM 113508) when phosphorylated (Kovacina et al., 2003 [PubMed 12524439]).[supplied by OMIM]

Other Designations OTTHUMP00000196757|OTTHUMP00000196758|OTTHUMP00000196759|OTTHUMP00000196760|proline-rich Akt substrate, 40 kDa