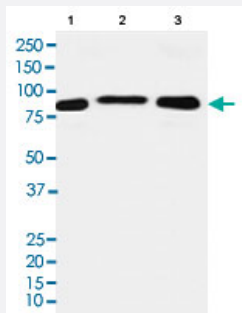


AOF1 monoclonal antibody, clone ADAG-11

Catalog # MAB22281 Size 100 uL

Applications



Western Blot (Cell lysate)

Western blot analysis of Lane 1: HeLa cell lysate; Lane 2: RAW264.7 cell lysate; Lane 3: PC12 cell lysate.

Specification

Product Description	Rabbit monoclonal antibody raised against synthetic peptide of human AOF1.
Immunogen	A synthetic peptide corresponding to human AOF1.
Host	Rabbit
Reactivity	Human, Mouse, Rat
Specificity	The antibody reacts with human, mouse, rat AOF1, in native form and recombinant. Superfamily members of AOF1 are not reactive to this antibody.
Form	Liquid
Purification	Affinity purification
Isotype	IgG
Recommend Usage	Flow Cytometry (1:50) Immunocytochemistry (1:50-1:200) Immunofluorescence (1:50-1:200) Immunoprecipitation (1:60) Western Blot (1:500-1:2000) The optimal working dilution should be determined by the end user.

Storage Buffer	In PBS, 150 mM NaCl, pH 7.4 (50% glycerol, 0.02% sodium azide).
Storage Instruction	Store at 4°C for short term storage. For long term storage store at -20°C. Aliquot to avoid repeated freezing and thawing.
Note	This product contains sodium azide: a POISONOUS AND HAZARDOUS SUBSTANCE which should be handled by trained staff only.

Applications

- Western Blot (Cell lysate)

Western blot analysis of Lane 1: HeLa cell lysate; Lane 2: RAW264.7 cell lysate; Lane 3: PC12 cell lysate.

- Immunocytochemistry
- Immunofluorescence
- Immunoprecipitation
- Flow Cytometry

Gene Info — AOF1

Entrez GeneID	221656
Protein Accession#	Q8NB78
Gene Name	AOF1
Gene Alias	C6orf193, DKFZp686I0412, FLJ33898, FLJ34109, FLJ43328, bA204B7.3, dJ298J15.2
Gene Description	amine oxidase (flavin containing) domain 1
Gene Ontology	Hyperlink
Gene Summary	flavin containing 1
Other Designations	OTTHUMP00000016075 OTTHUMP00000016077 OTTHUMP00000039336 amine oxidase, flavin containing 1