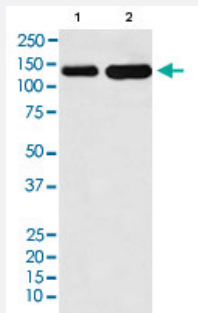


CDH6 monoclonal antibody, clone AFCE-3

Catalog # MAB22276 Size 100 uL

Applications



Western Blot

Western blot analysis of Lane 1: Jurkat cell lysate; Lane 2: Mouse heart lysate.

Specification

Product Description	Rabbit monoclonal antibody raised against synthetic peptide of human CDH6.
Immunogen	A synthetic peptide corresponding to human CDH6.
Host	Rabbit
Reactivity	Human, Mouse
Specificity	The antibody reacts with human, mouse CDH6, in native form and recombinant. Superfamily members of CDH6 are not reactive to this antibody.
Form	Liquid
Purification	Affinity purification
Isotype	IgG
Recommend Usage	Immunoprecipitation (1:50) Western Blot (1:500-1:2000) The optimal working dilution should be determined by the end user.
Storage Buffer	In PBS, 150 mM NaCl, pH 7.4 (50% glycerol, 0.02% sodium azide).

Storage Instruction

Store at 4°C for short term storage. For long term storage store at -20°C.
Aliquot to avoid repeated freezing and thawing.

Note

This product contains sodium azide: a POISONOUS AND HAZARDOUS SUBSTANCE which should be handled by trained staff only.

Applications

- Western Blot

Western blot analysis of Lane 1: Jurkat cell lysate; Lane 2: Mouse heart lysate.

- Immunoprecipitation

Gene Info — CDH6

Entrez GeneID[1004](#)**Protein Accession#**[P55285](#)**Gene Name**

CDH6

Gene Alias

KCAD

Gene Description

cadherin 6, type 2, K-cadherin (fetal kidney)

Omim ID[603007](#)**Gene Ontology**[Hyperlink](#)**Gene Summary**

This gene encodes a type II classical cadherin from the cadherin superfamily. The encoded membrane protein is a calcium dependent cell-cell adhesion glycoprotein comprised of five extracellular cadherin repeats, a transmembrane region and a highly conserved cytoplasmic tail. Cadherins mediate cell-cell binding in a homophilic manner, contributing to the sorting of heterogeneous cell types and the maintenance of orderly structures such as epithelium. Strong transcriptional expression of this gene has been observed in hepatocellular and renal carcinoma cell lines, suggesting a possible role in metastasis and invasion. [provided by RefSeq]

Other Designations

K-cadherin|cadherin 6, K-cadherin (fetal kidney)|cadherin 6, type 2|cadherin, fetal kidney|kidney cadherin