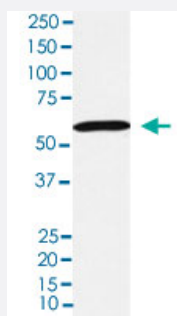


CASQ1 monoclonal antibody, clone AEGE-3

Catalog # MAB22266 Size 100 uL

Applications



Western Blot (Tissue lysate)

Western blot analysis of human skeletal muscle lysate.

Specification

Product Description	Rabbit monoclonal antibody raised against synthetic peptide of human CASQ1.
Immunogen	A synthetic peptide corresponding to human CASQ1.
Host	Rabbit
Reactivity	Human
Specificity	The antibody reacts with human CASQ1, in native form and recombinant. Superfamily members of CASQ1 are not reactive to this antibody.
Form	Liquid
Purification	Affinity purification
Isotype	IgG
Recommend Usage	Flow Cytometry (1:100) Immunohistochemistry (1:50-1:200) Western Blot (1:1000-1:5000) The optimal working dilution should be determined by the end user.
Storage Buffer	In PBS, 150 mM NaCl, pH 7.4 (50% glycerol, 0.02% sodium azide).

Storage Instruction

Store at 4°C for short term storage. For long term storage store at -20°C.
Aliquot to avoid repeated freezing and thawing.

Note

This product contains sodium azide: a POISONOUS AND HAZARDOUS SUBSTANCE which should be handled by trained staff only.

Applications

- Western Blot (Tissue lysate)

Western blot analysis of human skeletal muscle lysate.

- Immunohistochemistry

- Flow Cytometry

Gene Info — CASQ1

Entrez GeneID[844](#)**Protein Accession#**[P31415](#)**Gene Name**

CASQ1

Gene Alias

CASQ, PDIB1

Gene Description

calsequestrin 1 (fast-twitch, skeletal muscle)

Omim ID[114250](#)**Gene Ontology**[Hyperlink](#)**Gene Summary**

The protein encoded by this gene is a mitochondrial calcium-binding protein located in the luminal space of the terminal cisternae of the sarcoplasmic reticulum. The protein binds and putatively stores calcium ions. The protein is absent in patients with Duchenne and Becker types of muscular dystrophy. [provided by RefSeq]

Other Designations

calmitine|calsequestrin 1

Disease

- [Diabetes Mellitus](#)

- [Dyslipidemias](#)

- [Genetic Predisposition to Disease](#)
- [Obesity](#)