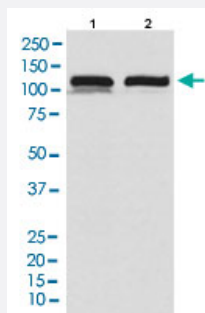


# USP11 monoclonal antibody, clone ADCC-21

Catalog # MAB22265      Size 100 uL

## Applications



### Western Blot

Western blot analysis of Lane 1: HEK293 cell lysate; Lane 2: Mouse testis lysate.

## Specification

<b>Product Description</b>	Rabbit monoclonal antibody raised against synthetic peptide of human USP11.
<b>Immunogen</b>	A synthetic peptide corresponding to human USP11.
<b>Host</b>	Rabbit
<b>Reactivity</b>	Human, Mouse
<b>Specificity</b>	The antibody reacts with human, mouse USP11, in native form and recombinant. Superfamily members of USP11 are not reactive to this antibody.
<b>Form</b>	Liquid
<b>Purification</b>	Affinity purification
<b>Isotype</b>	IgG
<b>Recommend Usage</b>	Flow Cytometry (1:200) Immunocytochemistry (1:50-1:200) Immunofluorescence (1:50-1:200) Immunoprecipitation (1:100) Western Blot (1:500-1:2000) The optimal working dilution should be determined by the end user.

Storage Buffer	In PBS, 150 mM NaCl, pH 7.4 (50% glycerol, 0.02% sodium azide).
Storage Instruction	Store at 4°C for short term storage. For long term storage store at -20°C. Aliquot to avoid repeated freezing and thawing.
Note	This product contains sodium azide: a POISONOUS AND HAZARDOUS SUBSTANCE which should be handled by trained staff only.

## Applications

- Western Blot

Western blot analysis of Lane 1: HEK293 cell lysate; Lane 2: Mouse testis lysate.

- Immunocytochemistry

- Immunofluorescence

- Immunoprecipitation

- Flow Cytometry

## Gene Info — USP11

Entrez GeneID	<a href="#">8237</a>
Protein Accession#	<a href="#">P51784</a>
Gene Name	USP11
Gene Alias	UHX1
Gene Description	ubiquitin specific peptidase 11
Omim ID	<a href="#">300050</a>
Gene Ontology	<a href="#">Hyperlink</a>
Gene Summary	Protein ubiquitination controls many intracellular processes, including cell cycle progression, transcriptional activation, and signal transduction. This dynamic process, involving ubiquitin conjugating enzymes and deubiquitinating enzymes, adds and removes ubiquitin. Deubiquitinating enzymes are cysteine proteases that specifically cleave ubiquitin from ubiquitin-conjugated protein substrates. This gene encodes a deubiquitinating enzyme which lies in a gene cluster on chromosome Xp 11.23 [provided by RefSeq]

**Other Designations**

deubiquitinating enzyme 11|ubiquitin carboxyl-terminal hydrolase, X-linked|ubiquitin specific protease 11|ubiquitin thiolesterase 11|ubiquitin-specific processing protease 11

---