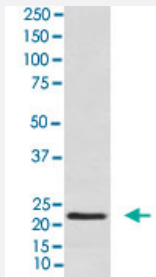


CSH1 monoclonal antibody, clone AFGE-3

Catalog # MAB22264 Size 100 uL

Applications



Western Blot (Tissue lysate)

Western blot analysis of human placenta lysate.

Specification

Product Description	Rabbit monoclonal antibody raised against synthetic peptide of human CSH1.
Immunogen	A synthetic peptide corresponding to human CSH1.
Host	Rabbit
Reactivity	Human
Specificity	The antibody reacts with human CSH1, in native form and recombinant. Superfamily members of CSH1 are not reactive to this antibody.
Form	Liquid
Purification	Affinity purification
Isotype	IgG
Recommend Usage	Immunohistochemistry (1:50-1:200) Immunoprecipitation (1:50) Western Blot (1:1000-1:5000) The optimal working dilution should be determined by the end user.
Storage Buffer	In PBS, 150 mM NaCl, pH 7.4 (50% glycerol, 0.02% sodium azide).

Storage Instruction

Store at 4°C for short term storage. For long term storage store at -20°C.
Aliquot to avoid repeated freezing and thawing.

Note

This product contains sodium azide: a POISONOUS AND HAZARDOUS SUBSTANCE which should be handled by trained staff only.

Applications

- Western Blot (Tissue lysate)

Western blot analysis of human placenta lysate.

- Immunohistochemistry

- Immunoprecipitation

Gene Info — CSH1

Entrez GeneID[1442](#)**Protein Accession#**[P01243](#)**Gene Name**

CSH1

Gene Alias

CSA, CSMT, FLJ75407, PL

Gene Description

chorionic somatomammotropin hormone 1 (placental lactogen)

Omim ID[150200](#)**Gene Ontology**[Hyperlink](#)**Gene Summary**

The protein encoded by this gene is a member of the somatotropin/prolactin family of hormones and plays an important role in growth control. The gene is located at the growth hormone locus on chromosome 17 along with four other related genes in the same transcriptional orientation; an arrangement which is thought to have evolved by a series of gene duplications. Although the five genes share a remarkably high degree of sequence identity, they are expressed selectively in different tissues. Alternative splicing generates additional isoforms of each of the five growth hormones, leading to further diversity and potential for specialization. This particular family member is expressed mainly in the placenta and utilizes multiple transcription initiation sites. Expression of the identical mature proteins for chorionic somatomammotropin hormones 1 and 2 is upregulated during development, although the ratio of 1 to 2 increases by term. Mutations in this gene result in placental lactogen deficiency and Silver-Russell syndrome. [provided by RefSeq]

Other Designations

CS-1|choriomammotropin|chorionic somatomammotropin A|chorionic somatomammotropin hormone 1|hCS-A|placental lactogen

Pathway

- [Cytokine-cytokine receptor interaction](#)
- [Jak-STAT signaling pathway](#)
- [Neuroactive ligand-receptor interaction](#)

Disease

- [Birth Weight](#)
- [Body Weight](#)
- [Breast cancer](#)
- [Breast Neoplasms](#)
- [Genetic Predisposition to Disease](#)
- [Metabolic Syndrome X](#)