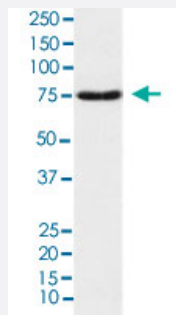


NTN1 monoclonal antibody, clone AFAD-14

Catalog # MAB22261 Size 100 uL

Applications



Western Blot (Tissue lysate)

Western blot analysis of human fetal brain lysate.

Specification

| | |
|----------------------------|--|
| Product Description | Rabbit monoclonal antibody raised against synthetic peptide of human NTN1. |
| Immunogen | A synthetic peptide corresponding to human NTN1. |
| Host | Rabbit |
| Reactivity | Human |
| Specificity | The antibody reacts with human NTN1, in native form and recombinant. Superfamily members of NTN1 are not reactive to this antibody. |
| Form | Liquid |
| Purification | Affinity purification |
| Isotype | IgG |
| Recommend Usage | Immunocytochemistry (1:50-1:200) Immunofluorescence (1:50-1:200) Western Blot (1:500-1:2000) The optimal working dilution should be determined by the end user. |
| Storage Buffer | In PBS, 150 mM NaCl, pH 7.4 (50% glycerol, 0.02% sodium azide). |

Storage Instruction

Store at 4°C for short term storage. For long term storage store at -20°C.
Aliquot to avoid repeated freezing and thawing.

Note

This product contains sodium azide: a POISONOUS AND HAZARDOUS SUBSTANCE which should be handled by trained staff only.

Applications

- Western Blot (Tissue lysate)

Western blot analysis of human fetal brain lysate.

- Immunocytochemistry

- Immunofluorescence

Gene Info — NTN1

Entrez GeneID[9423](#)**Protein Accession#**[O95631](#)**Gene Name**

NTN1

Gene Alias

NTN1L

Gene Description

netrin 1

Omim ID[601614](#)**Gene Ontology**[Hyperlink](#)**Gene Summary**

Netrin is included in a family of laminin-related secreted proteins. The function of this gene has not yet been defined; however, netrin is thought to be involved in axon guidance and cell migration during development. Mutations and loss of expression of netrin suggest that variation in netrin may be involved in cancer development. [provided by RefSeq]

Other Designations

Netrin-1|netrin 1, mouse, homolog of

Pathway

- [Axon guidance](#)