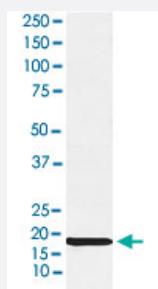


TSHB monoclonal antibody, clone AFDE-20

Catalog # MAB22251 Size 100 uL

Applications



Western Blot (Tissue lysate)

Western blot analysis of human pituitary lysate.

Specification

Product Description	Rabbit monoclonal antibody raised against synthetic peptide of human TSHB.
Immunogen	A synthetic peptide corresponding to human TSHB.
Host	Rabbit
Reactivity	Human
Specificity	The antibody reacts with human TSHB, in native form and recombinant. Superfamily members of TSHB are not reactive to this antibody.
Form	Liquid
Purification	Affinity purification
Isotype	IgG
Recommend Usage	Immunohistochemistry (1:50-1:200) Western Blot (1:500-1:2000) The optimal working dilution should be determined by the end user.
Storage Buffer	In PBS, 150 mM NaCl, pH 7.4 (50% glycerol, 0.02% sodium azide).

Storage Instruction

Store at 4°C for short term storage. For long term storage store at -20°C.
Aliquot to avoid repeated freezing and thawing.

Note

This product contains sodium azide: a POISONOUS AND HAZARDOUS SUBSTANCE which should be handled by trained staff only.

Applications

- Western Blot (Tissue lysate)

Western blot analysis of human pituitary lysate.

- Immunohistochemistry

Gene Info — TSHB

Entrez GeneID[7252](#)**Protein Accession#**[P01222](#)**Gene Name**

TSHB

Gene Alias

CHNG4, TSH-BETA

Gene Description

thyroid stimulating hormone, beta

Omim ID[188540](#)**Gene Ontology**[Hyperlink](#)**Gene Summary**

Thyrotropin-stimulating hormone (TSH) is a noncovalently linked glycoprotein heterodimer and is part of a family of pituitary hormones containing a common alpha subunit (TSHA; see MIM 118850) and a unique beta subunit that confers specificity.[supplied by OMIM]

Other Designations

OTTHUMP00000013654|thyrotropin beta subunit

Pathway

- [Autoimmune thyroid disease](#)
- [Neuroactive ligand-receptor interaction](#)

Disease

- [Congenital Hypothyroidism](#)
- [Genetic Predisposition to Disease](#)
- [Growth Disorders](#)
- [Hypothyroidism](#)
- [Thyroid Neoplasms](#)