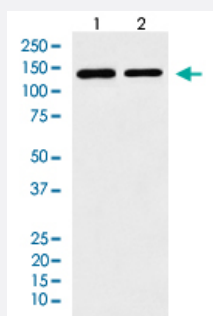


STAG2 monoclonal antibody, clone ADEG-19

Catalog # MAB22247 Size 100 uL

Applications



Western Blot (Cell lysate)

Western blot analysis of STAG2 in Lane 1: K-562 cell lysate, Lane 2: Raw 264.7 cell lysate.

Specification

Product Description	Rabbit monoclonal antibody raised against synthetic peptide of human STAG2.
Immunogen	A synthetic peptide corresponding to human STAG2.
Host	Rabbit
Reactivity	Human, Mouse
Specificity	This antibody reacts with human and mouse STAG2, in native form and recombinant. Superfamily members of STAG2 are not reactive to this antibody.
Form	Liquid
Purification	Affinity purification
Isotype	IgG
Recommend Usage	Flow Cytometry (1:200) Immunocytochemistry (1:50-1:200) Immunofluorescence(1:50-1:200) Immunohistochemistry (1:100-1:500) Western Blot (1:500-1:1000) The optimal working dilution should be determined by the end user.

Storage Buffer	In PBS, 150 mM NaCl, pH 7.4 (50% glycerol, 0.02% sodium azide).
Storage Instruction	Store at -20°C for one year. Aliquot to avoid repeated freezing and thawing.
Note	This product contains sodium azide: a POISONOUS AND HAZARDOUS SUBSTANCE which should be handled by trained staff only.

Applications

- Western Blot (Cell lysate)

Western blot analysis of STAG2 in Lane 1: K-562 cell lysate, Lane 2: Raw 264.7 cell lysate.

- Immunohistochemistry
- Immunocytochemistry
- Immunofluorescence
- Flow Cytometry

Gene Info — STAG2

Entrez GeneID	10735
Protein Accession#	Q8N3U4
Gene Name	STAG2
Gene Alias	DKFZp686P168, DKFZp781H1753, FLJ25871, SA-2, SA2, bA517O1.1
Gene Description	stromal antigen 2
Omim ID	604359
Gene Ontology	Hyperlink
Other Designations	OTTHUMP00000024338 OTTHUMP00000043514 OTTHUMP00000043515 OTTHUMP00000081754 OTTHUMP00000081755 SCC3 homolog 2

Pathway

- [Cell cycle](#)