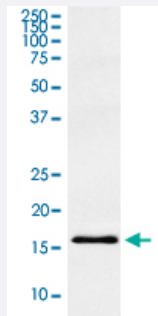


SNCG monoclonal antibody, clone ADEE-19

Catalog # MAB22245 Size 100 uL

Applications



Western Blot (Tissue lysate)

Western Blot analysis of TPT1 in human fetal brain lysate.

Specification

Product Description	Rabbit monoclonal antibody raised against synthetic peptide of human SNCG.
Immunogen	A synthetic peptide corresponding to human SNCG.
Host	Rabbit
Reactivity	Human
Specificity	This antibody reacts with humant SNCG, in native form and recombinant. Superfamily members of S NCG are not reactive to this antibody.
Form	Liquid
Purification	Affinity purification
Isotype	IgG

Recommend Usage	Flow Cytometry (1:30) Immunocytochemistry (1:50-1:200) Immunofluorescence(1:50-1:200) Immunohistochemistry (1:50-1:200) Immunoprecipitation (1:20) Western Blot (1:500-1:2000) The optimal working dilution should be determined by the end user.
Storage Buffer	In PBS, 150 mM NaCl, pH 7.4 (50% glycerol, 0.02% sodium azide).
Storage Instruction	Store at -20°C for one year. Aliquot to avoid repeated freezing and thawing.
Note	This product contains sodium azide: a POISONOUS AND HAZARDOUS SUBSTANCE which should be handled by trained staff only.

Applications

- Western Blot (Tissue lysate)

Western Blot analysis of TPT1 in human fetal brain lysate.

- Immunohistochemistry

- Immunocytochemistry

- Immunofluorescence

- Immunoprecipitation

- Flow Cytometry

Gene Info — SNCG

Entrez GeneID	6623
Protein Accession#	O76070
Gene Name	SNCG
Gene Alias	BCSG1, SR
Gene Description	synuclein, gamma (breast cancer-specific protein 1)

Omim ID	602998
Gene Ontology	Hyperlink
Gene Summary	Summary: This gene encodes a member of the synuclein family of proteins which are believed to be involved in the pathogenesis of neurodegenerative diseases. Mutations in this gene have also been associated with breast tumor development. [provided by RefSeq]
Other Designations	OTTHUMP00000020013 breast cancer-specific protein 1 persyn synoretin synuclein, gamma (breast cancer-specific gene 1)

Disease

- [Alzheimer disease](#)
- [Parkinson disease](#)