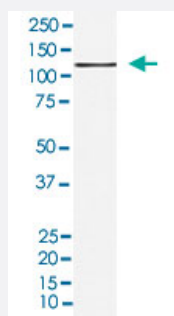


KSR1 monoclonal antibody, clone AE00-11

Catalog # MAB22241

Size 100 uL

Applications



Western Blot (Cell lysate)

Western blot analysis of 293 cell lysate.

Specification

Product Description	Rabbit monoclonal antibody raised against synthetic peptide of human KSR1.
Immunogen	A synthetic peptide corresponding to human KSR1.
Host	Rabbit
Reactivity	Human
Specificity	The antibody reacts with human KSR1, in native form and recombinant. Superfamily members of KSR1 are not reactive to this antibody.
Form	Liquid
Purification	Affinity purification
Isotype	IgG
Recommend Usage	Flow Cytometry (1:100) Immunocytochemistry (1:50-1:200) Immunofluorescence (1:50-1:200) Immunohistochemistry (1:50-1:200) Western Blot (1:500-1:2000) The optimal working dilution should be determined by the end user.

Storage Buffer	In PBS, 150 mM NaCl, pH 7.4 (50% glycerol, 0.02% sodium azide).
Storage Instruction	Store at 4°C for short term storage. For long term storage store at -20°C. Aliquot to avoid repeated freezing and thawing.
Note	This product contains sodium azide: a POISONOUS AND HAZARDOUS SUBSTANCE which should be handled by trained staff only.

Applications

- Western Blot (Cell lysate)

Western blot analysis of 293 cell lysate.

- Immunohistochemistry
- Immunocytochemistry
- Immunofluorescence
- Flow Cytometry

Gene Info — KSR1

Entrez GeneID	8844
Protein Accession#	Q8IVT5
Gene Name	KSR1
Gene Alias	KSR, RSU2
Gene Description	kinase suppressor of ras 1
Omim ID	601132
Gene Ontology	Hyperlink
Other Designations	kinase suppressor of ras

Disease

- [Tobacco Use Disorder](#)