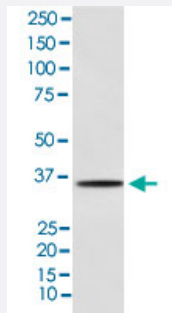


MYOG monoclonal antibody, clone AFFH-13

Catalog # MAB22240 Size 100 uL

Applications



Western Blot (Cell lysate)

Western blot analysis of C2C12 cell lysate.

Specification

| | |
|----------------------------|---|
| Product Description | Rabbit monoclonal antibody raised against synthetic peptide of human MYOG. |
| Immunogen | A synthetic peptide corresponding to human MYOG. |
| Host | Rabbit |
| Reactivity | Human, Mouse |
| Specificity | The antibody reacts with human, mouse MYOG, in native form and recombinant. Superfamily members of MYOG are not reactive to this antibody. |
| Form | Liquid |
| Purification | Affinity purification |
| Isotype | IgG |
| Recommend Usage | Flow Cytometry (1:40) Immunohistochemistry (1:50-1:200) Western Blot (1:500-1:2000) The optimal working dilution should be determined by the end user. |
| Storage Buffer | In PBS, 150 mM NaCl, pH 7.4 (50% glycerol, 0.02% sodium azide). |

Storage Instruction

Store at 4°C for short term storage. For long term storage store at -20°C.
Aliquot to avoid repeated freezing and thawing.

Note

This product contains sodium azide: a POISONOUS AND HAZARDOUS SUBSTANCE which should be handled by trained staff only.

Applications

- Western Blot (Cell lysate)

Western blot analysis of C2C12 cell lysate.

- Immunohistochemistry

- Flow Cytometry

Gene Info — MYOG

Entrez GeneID[4656](#)**Protein Accession#**[P15173](#)**Gene Name**

MYOG

Gene Alias

MYF4, MYOGENIN, bHLHc3

Gene Description

myogenin (myogenic factor 4)

Omim ID[159980](#)**Gene Ontology**[Hyperlink](#)**Gene Summary**

Myogenin is a muscle-specific transcription factor that can induce myogenesis in a variety of cell types in tissue culture. It is a member of a large family of proteins related by sequence homology, the helix-loop-helix (HLH) proteins. It is essential for the development of functional skeletal muscle. [provided by RefSeq]

Other Designations

Myogenic factor-4; myogenin|OTTHUMP00000039094|myogenic factor 4|myogenin