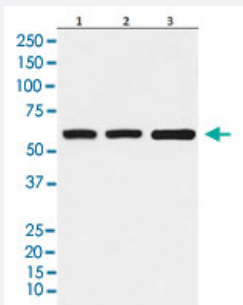


# ELP3 monoclonal antibody, clone ADAF-5

Catalog # MAB22233      Size 100 uL

## Applications



### Western Blot

Western blot analysis of Lane 1: HeLa cell lysate; Lane 2: Raw 264.7 cell lysate; Lane 3: Rat kidney lysate.

## Specification

<b>Product Description</b>	Rabbit monoclonal antibody raised against synthetic peptide of human ELP3.
<b>Immunogen</b>	A synthetic peptide corresponding to human ELP3.
<b>Host</b>	Rabbit
<b>Reactivity</b>	Human, Mouse, Rat
<b>Specificity</b>	The antibody reacts with human, mouse, rat ELP3, in native form and recombinant. Superfamily members of ELP3 are not reactive to this antibody.
<b>Form</b>	Liquid
<b>Purification</b>	Affinity purification
<b>Isotype</b>	IgG
<b>Recommend Usage</b>	Immunocytochemistry (1:50-1:200) Immunofluorescence (1:50-1:200) Immunoprecipitation (1:50) Western Blot (1:500-1:2000) The optimal working dilution should be determined by the end user.

Storage Buffer	In PBS, 150 mM NaCl, pH 7.4 (50% glycerol, 0.02% sodium azide).
Storage Instruction	Store at 4°C for short term storage. For long term storage store at -20°C. Aliquot to avoid repeated freezing and thawing.
Note	This product contains sodium azide: a POISONOUS AND HAZARDOUS SUBSTANCE which should be handled by trained staff only.

## Applications

- Western Blot

Western blot analysis of Lane 1: HeLa cell lysate; Lane 2: Raw 264.7 cell lysate; Lane 3: Rat kidney lysate.

- Immunocytochemistry

- Immunofluorescence

- Immunoprecipitation

## Gene Info — ELP3

Entrez GeneID	<a href="#">55140</a>
Protein Accession#	<a href="#">Q9H9T3</a>
Gene Name	ELP3
Gene Alias	FLJ10422, KAT9
Gene Description	elongation protein 3 homolog (S. cerevisiae)
Gene Ontology	<a href="#">Hyperlink</a>
Gene Summary	ELP3 is the catalytic subunit of the histone acetyltransferase elongator complex, which contributes to transcript elongation and also regulates the maturation of projection neurons (Creppe et al., 2009 [PubMed 19185337]).[supplied by OMIM]
Other Designations	elongation protein 3 homolog

## Disease

- [Amyotrophic lateral sclerosis](#)

- [Genetic Predisposition to Disease](#)