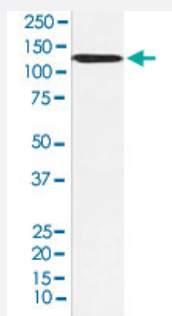


# SMARCA5 monoclonal antibody, clone AFDB-19

Catalog # MAB22228      Size 100 uL

## Applications



### Western Blot (Cell lysate)

Western blot analysis of MCF-7 cell lysate.

## Specification

<b>Product Description</b>	Rabbit monoclonal antibody raised against synthetic peptide of human SMARCA5.
<b>Immunogen</b>	A synthetic peptide corresponding to human SMARCA5.
<b>Host</b>	Rabbit
<b>Reactivity</b>	Human
<b>Specificity</b>	The antibody reacts with human SMARCA5, in native form and recombinant. Superfamily members of SMARCA5 are not reactive to this antibody.
<b>Form</b>	Liquid
<b>Purification</b>	Affinity purification
<b>Isotype</b>	IgG
<b>Recommend Usage</b>	Immunocytochemistry (1:50-1:200) Immunofluorescence (1:50-1:200) Western Blot (1:500-1:2000) The optimal working dilution should be determined by the end user.
<b>Storage Buffer</b>	In PBS, 150 mM NaCl, pH 7.4 (50% glycerol, 0.02% sodium azide).

**Storage Instruction**

Store at 4°C for short term storage. For long term storage store at -20°C.  
Aliquot to avoid repeated freezing and thawing.

**Note**

This product contains sodium azide: a POISONOUS AND HAZARDOUS SUBSTANCE which should be handled by trained staff only.

## Applications

- Western Blot (Cell lysate)

Western blot analysis of MCF-7 cell lysate.

- Immunocytochemistry

- Immunofluorescence

## Gene Info — SMARCA5

**Entrez GeneID**[8467](#)**Protein Accession#**[O60264](#)**Gene Name**

SMARCA5

**Gene Alias**

ISWI, SNF2H, WCRF135, hISWI, hSNF2H

**Gene Description**

SWI/SNF related, matrix associated, actin dependent regulator of chromatin, subfamily a, member 5

**Omim ID**[603375](#)**Gene Ontology**[Hyperlink](#)**Gene Summary**

The protein encoded by this gene is a member of the SWI/SNF family of proteins. Members of this family have helicase and ATPase activities and are thought to regulate transcription of certain genes by altering the chromatin structure around those genes. The protein encoded by this gene is a component of the chromatin remodeling and spacing factor RSF, a facilitator of the transcription of class II genes by RNA polymerase II. The encoded protein is similar in sequence to the Drosophila ISWI chromatin remodeling protein. [provided by RefSeq]

**Other Designations**

SWI/SNF-related matrix-associated actin-dependent regulator of chromatin a5|sucrose nonfermenting-like 5