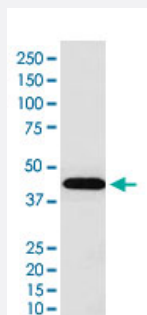


# INHA monoclonal antibody, clone AEOF-9

Catalog # MAB22217      Size 100 uL

## Applications



### Western Blot (Cell lysate)

Western Blot (cell lysate) analysis of HeLa cell lysate.

## Specification

<b>Product Description</b>	Rabbit monoclonal antibody raised against synthetic protein of human INHA.
<b>Immunogen</b>	A synthetic peptide corresponding to human INHA.
<b>Host</b>	Rabbit
<b>Reactivity</b>	Human, Mouse, Rat
<b>Specificity</b>	This antibody reacts with human, mouse, rat INHA, in native form and recombinant. Superfamily members of INHA are not reactive to antibody.
<b>Form</b>	Liquid
<b>Purification</b>	Affinity purification
<b>Isotype</b>	IgG
<b>Recommend Usage</b>	Western Blot (1:500-2000) The optimal working dilution should be determined by the end user.
<b>Storage Buffer</b>	In PBS, 150 mM NaCl, pH 7.4 (50% glycerol, 0.02% sodium azide).

**Storage Instruction**

Store at 4°C. For long term storage store at -20°C.  
Aliquot to avoid repeated freezing and thawing.

**Note**

This product contains sodium azide: a POISONOUS AND HAZARDOUS SUBSTANCE which should be handled by trained staff only.

## Applications

- Western Blot (Cell lysate)

Western Blot (cell lysate) analysis of HeLa cell lysate.

## Gene Info — INHA

**Entrez GeneID**[3623](#)**Protein Accession#**[P05111](#)**Gene Name**

INHA

**Gene Alias**

-

**Gene Description**

inhibin, alpha

**Omim ID**[147380](#)**Gene Ontology**[Hyperlink](#)**Gene Summary**

The inhibin alpha subunit joins either the beta A or beta B subunit to form a pituitary FSH secretory inhibitor. Inhibin has been shown to regulate gonadal stromal cell proliferation negatively and to have tumour-suppressor activity. In addition, serum levels of inhibin have been shown to reflect the size of granulosa-cell tumors and can therefore be used as a marker for primary as well as recurrent disease. However, in prostate cancer, expression of the inhibin alpha-subunit gene was suppressed and was not detectable in poorly differentiated tumor cells. Furthermore, because expression in gonadal and various extragonadal tissues may vary severalfold in a tissue-specific fashion, it is proposed that inhibin may be both a growth/differentiation factor and a hormone. [provided by RefSeq]

**Other Designations**

A-inhibin subunit|inhibin alpha subunit

## Disease

- [Abortion](#)
- [Amenorrhea](#)

- [Breast Neoplasms](#)
- [Disease Models](#)
- [Fragile X syndrome](#)
- [Genetic Predisposition to Disease](#)
- [Infertility](#)
- [Neoplasms](#)
- [Obesity](#)
- [Ovarian cancer](#)
- [Ovarian Failure](#)
- [Ovarian Neoplasms](#)
- [Polycystic Ovary Syndrome](#)
- [Pre-Eclampsia](#)
- [Prostate cancer](#)
- [Prostatic Neoplasms](#)
- [Puberty](#)
- [Testicular Neoplasms](#)
- [Thrombophilia](#)
- [Tobacco Use Disorder](#)