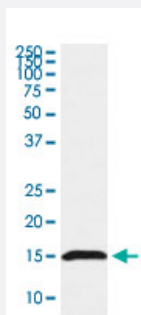


IFITM3 monoclonal antibody, clone ADAC-9

Catalog # MAB22206 Size 100 uL

Applications



Western Blot (Cell lysate)

Western Blot (cell lysate) analysis of HeLa cell lysate.

Specification

Product Description	Rabbit monoclonal antibody raised against synthetic protein of human IFITM3.
Immunogen	A synthetic peptide corresponding to human IFITM3.
Host	Rabbit
Reactivity	Human
Specificity	This antibody reacts with human IFITM3, in native form and recombinant. Superfamily members of IFITM3 are not reactive to antibody.
Form	Liquid
Purification	Affinity purification
Isotype	IgG
Recommend Usage	Western Blot (1:500-2000) The optimal working dilution should be determined by the end user.
Storage Buffer	In PBS, 150 mM NaCl, pH 7.4 (50% glycerol, 0.02% sodium azide).

Storage Instruction

Store at -20°C.
Aliquot to avoid repeated freezing and thawing.

Note

This product contains sodium azide: a POISONOUS AND HAZARDOUS SUBSTANCE which should be handled by trained staff only.

Applications

- Western Blot (Cell lysate)

Western Blot (cell lysate) analysis of HeLa cell lysate.

Gene Info — IFITM3

Entrez GeneID[10410](#)**Protein Accession#**[Q01628](#)**Gene Name**

IFITM3

Gene Alias

1-8U, IP15

Gene Description

interferon induced transmembrane protein 3 (1-8U)

Omim ID[605579](#)**Gene Ontology**[Hyperlink](#)**Other Designations**

interferon-induced transmembrane protein 3 (1-8U)|interferon-inducible

Disease

- [Colitis](#)
- [Genetic Predisposition to Disease](#)