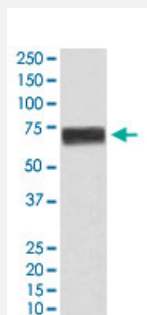


HPX monoclonal antibody, clone ADAD-8

Catalog # MAB22203 Size 100 uL

Applications



Western Blot (Tissue lysate)

Western Blot (tissue lysate) analysis of human fetal liver lysate.

Specification

Product Description	Rabbit monoclonal antibody raised against synthetic protein of human HPX.
Immunogen	A synthetic peptide corresponding to human HPX.
Host	Rabbit
Reactivity	Human
Specificity	This antibody reacts with human HPX, in native form and recombinant. Superfamily members of HPX are not reactive to antibody.
Form	Liquid
Purification	Affinity purification
Isotype	IgG
Recommend Usage	Western Blot (1:1000-5000) The optimal working dilution should be determined by the end user.
Storage Buffer	In PBS, 150 mM NaCl, pH 7.4 (50% glycerol, 0.02% sodium azide).

Storage Instruction

Store at 4°C. For long term storage store at -20°C.
Aliquot to avoid repeated freezing and thawing.

Note

This product contains sodium azide: a POISONOUS AND HAZARDOUS SUBSTANCE which should be handled by trained staff only.

Applications

- Western Blot (Tissue lysate)

Western Blot (tissue lysate) analysis of human fetal liver lysate.

Gene Info — HPX

Entrez GeneID[3263](#)**Protein Accession#**[P02790](#)**Gene Name**

HPX

Gene Alias

-

Gene Description

hemopexin

Omim ID[142290](#)**Gene Ontology**[Hyperlink](#)**Gene Summary**

This gene encodes a plasma glycoprotein that binds heme with high affinity. The encoded protein is an acute phase protein that transports heme from the plasma to the liver and may be involved in protecting cells from oxidative stress. [provided by RefSeq]

Other Designations

-

Disease

- [Cardiovascular Diseases](#)
- [Diabetes Mellitus](#)
- [Edema](#)