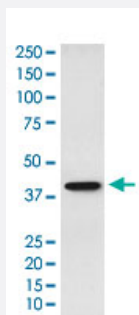


SET monoclonal antibody, clone AEEO-19

Catalog # MAB22201 Size 100 uL

Applications



Western Blot (Cell lysate)

Western Blot (cell lysate) analysis of HepG2 cell lysate.

Specification

Product Description	Rabbit monoclonal antibody raised against synthetic protein of human SET.
Immunogen	A synthetic peptide corresponding to human SET.
Host	Rabbit
Reactivity	Human
Specificity	This antibody reacts with human, mouse, rat SET, in native form and recombinant. Superfamily members of SET are not reactive to antibody.
Form	Liquid
Purification	Affinity purification
Isotype	IgG
Recommend Usage	Western Blot (1:1000-5000) The optimal working dilution should be determined by the end user.
Storage Buffer	In PBS, 150 mM NaCl, pH 7.4 (50% glycerol, 0.02% sodium azide).

Storage Instruction

Store at 4°C. For long term storage store at -20°C.
Aliquot to avoid repeated freezing and thawing.

Note

This product contains sodium azide: a POISONOUS AND HAZARDOUS SUBSTANCE which should be handled by trained staff only.

Applications

- Western Blot (Cell lysate)

Western Blot (cell lysate) analysis of HepG2 cell lysate.

Gene Info — SET

Entrez GeneID[6418](#)**Protein Accession#**[Q01105](#)**Gene Name**

SET

Gene Alias

2PP2A, I2PP2A, IGAAD, IPP2A2, PHAPII, TAF-I, TAF-IBETA

Gene Description

SET nuclear oncogene

Omim ID[600960](#)**Gene Ontology**[Hyperlink](#)**Gene Summary**

chromatin remodelling factor|inhibitor of granzyme A-activated DNase|inhibitor-2 of protein phosphatase-2A|protein phosphatase ty

Other Designations

HLA-DR-associated protein II|OTTHUMP00000022286|SET translocation (myeloid leukemia-associated)|Template-Activating Factor-I, chromatin remodelling factor|inhibitor of granzyme A-activated DNase|inhibitor-2 of protein phosphatase-2A|protein phosphatase ty

Disease

- [Cleft Lip](#)
- [Cleft Palate](#)