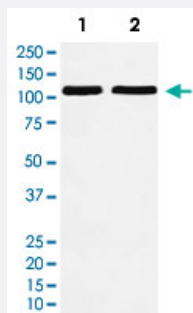


# SYNE1 monoclonal antibody, clone AEFE-19

Catalog # MAB22198      Size 100 uL

## Applications



### Western Blot

Western Blot analysis of (1) HeLa cell lysate, (2) RAW264.7 cell lysate.

## Specification

<b>Product Description</b>	Rabbit monoclonal antibody raised against synthetic protein of human SYNE1.
<b>Immunogen</b>	A synthetic peptide corresponding to human SYNE1.
<b>Host</b>	Rabbit
<b>Reactivity</b>	Human, Mouse, Rat
<b>Specificity</b>	This antibody reacts with human, mouse, rat SYNE1, in native form and recombinant. Superfamily members of SYNE1 are not reactive to antibody.
<b>Form</b>	Liquid
<b>Purification</b>	Affinity purification
<b>Isotype</b>	IgG
<b>Recommend Usage</b>	Western Blot (1:500-2000) The optimal working dilution should be determined by the end user.
<b>Storage Buffer</b>	In PBS, 150 mM NaCl, pH 7.4 (50% glycerol, 0.02% sodium azide).

**Storage Instruction**

Store at 4°C. For long term storage store at -20°C.  
Aliquot to avoid repeated freezing and thawing.

**Note**

This product contains sodium azide: a POISONOUS AND HAZARDOUS SUBSTANCE which should be handled by trained staff only.

## Applications

- Western Blot

Western Blot analysis of (1) HeLa cell lysate, (2) RAW264.7 cell lysate.

## Gene Info — SYNE1

**Entrez GeneID**[23345](#)**Protein Accession#**[Q8NF91](#)**Gene Name**

SYNE1

**Gene Alias**

8B, CPG2, DKFZp781J13156, FLJ30878, FLJ41140, KIAA0796, KIAA1262, KIAA1756, MYNE1, SCAR8

**Gene Description**

spectrin repeat containing, nuclear envelope 1

**Omim ID**[608441](#) [610743](#)**Gene Ontology**[Hyperlink](#)**Gene Summary**

This gene encodes a spectrin repeat containing protein expressed in skeletal and smooth muscle, and peripheral blood lymphocytes, that localizes to the nuclear membrane. Mutations in this gene have been associated with autosomal recessive spinocerebellar ataxia 8, also referred to as autosomal recessive cerebellar ataxia type 1 or recessive ataxia of Beauce. Alternatively spliced transcript variants encoding different isoforms have been described. [provided by RefSeq]

**Other Designations**

OTTHUMP00000017437|OTTHUMP00000017438|enaptin|nesprin 1|nuclear envelope spectrin repeat protein 1|synaptic nuclei expressed gene 1

## Disease

- [Carcinoma](#)
- [Esophageal Neoplasms](#)
- [Genetic Predisposition to Disease](#)

- [Ovarian Neoplasms](#)
- [Tobacco Use Disorder](#)