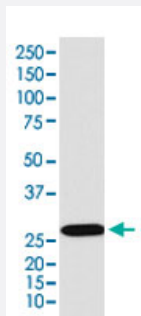


# LIN28A monoclonal antibody, clone AFFE-12

Catalog # MAB22182      Size 100 uL

## Applications



### Western Blot (Cell lysate)

Western Blot (cell lysate) analysis of NCCIT cell lysate.

## Specification

<b>Product Description</b>	Rabbit monoclonal antibody raised against synthetic protein of human LIN28A.
<b>Immunogen</b>	A synthetic peptide corresponding to human LIN28A.
<b>Host</b>	Rabbit
<b>Reactivity</b>	Human
<b>Specificity</b>	This antibody reacts with human LIN28A, in native form and recombinant. Superfamily members of LIN28A are not reactive to antibody.
<b>Form</b>	Liquid
<b>Purification</b>	Affinity purification
<b>Isotype</b>	IgG
<b>Recommend Usage</b>	Western Blot (1:1000-5000) The optimal working dilution should be determined by the end user.
<b>Storage Buffer</b>	In PBS, 150 mM NaCl, pH 7.4 (50% glycerol, 0.02% sodium azide).

**Storage Instruction**

Store at 4°C. For long term storage store at -20°C.  
Aliquot to avoid repeated freezing and thawing.

**Note**

This product contains sodium azide: a POISONOUS AND HAZARDOUS SUBSTANCE which should be handled by trained staff only.

## Applications

- Western Blot (Cell lysate)

Western Blot (cell lysate) analysis of NCCIT cell lysate.

## Gene Info — LIN28

**Entrez GeneID**[79727](#)**Protein Accession#**[Q9H9Z2](#)**Gene Name**

LIN28

**Gene Alias**

CSDD1, FLJ12457, LIN-28, LIN28A, ZCCHC1

**Gene Description**

lin-28 homolog (C. elegans)

**Omim ID**[611043](#)**Gene Ontology**[Hyperlink](#)**Gene Summary**

CCHC domain containing 1

**Other Designations**

OTTHUMP00000003663|RNA-binding protein LIN-28|lin-28 homolog|zinc finger, CCHC domain containing 1