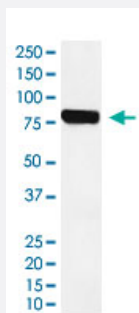


NDC80 monoclonal antibody, clone ACBI-14

Catalog # MAB22158 Size 100 uL

Applications



Western Blot (Cell lysate)

Western Blot (cell lysate) analysis of Jurkat cell lysate.

Specification

Product Description	Rabbit monoclonal antibody raised against synthetic protein of human NDC80.
Immunogen	A synthetic peptide corresponding to human NDC80.
Host	Rabbit
Reactivity	Human, Mouse, Rat
Specificity	This antibody reacts with human, mouse, rat NDC80, in native form and recombinant. Superfamily members of NDC80 are not reactive to antibody.
Form	Liquid
Purification	Affinity purification
Isotype	IgG
Recommend Usage	Western Blot (1:100-5000) The optimal working dilution should be determined by the end user.
Storage Buffer	In PBS, 150 mM NaCl, pH 7.4 (50% glycerol, 0.02% sodium azide).

Storage Instruction

Store at 4°C. For long term storage store at -20°C.
Aliquot to avoid repeated freezing and thawing.

Note

This product contains sodium azide: a POISONOUS AND HAZARDOUS SUBSTANCE which should be handled by trained staff only.

Applications

- Western Blot (Cell lysate)

Western Blot (cell lysate) analysis of Jurkat cell lysate.

Gene Info — NDC80

Entrez GeneID[10403](#)**Protein Accession#**[O14777](#)**Gene Name**

NDC80

Gene Alias

HEC, HEC1, KNTC2, TID3, hsNDC80

Gene Description

NDC80 homolog, kinetochore complex component (S. cerevisiae)

Omim ID[607272](#)**Gene Ontology**[Hyperlink](#)**Gene Summary**

HEC is one of several proteins involved in spindle checkpoint signaling. This surveillance mechanism assures correct segregation of chromosomes during cell division by detecting unaligned chromosomes and causing prometaphase arrest until the proper bipolar attachment of chromosomes is achieved.[supplied by OMIM]

Other Designations

highly expressed in cancer, rich in leucine heptad repeats|kinetochore associated 2

Disease

- [Kidney Failure](#)