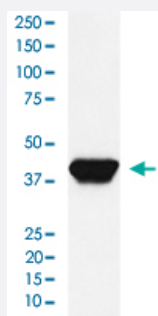


SPI1 monoclonal antibody, clone AEIG-19

Catalog # MAB22154 Size 100 uL

Applications



Western Blot (Cell lysate)

Western Blot analysis of SPI1 in Daudi cell lysate.

Specification

Product Description	Rabbit monoclonal antibody raised against synthetic peptide of human SPI1.
Immunogen	A synthetic peptide corresponding to human SPI1.
Host	Rabbit
Reactivity	Human
Specificity	This antibody reacts with human SPI1, in native form and recombinant. Superfamily members of SPI 1 are not reactive to this antibody.
Form	Liquid
Purification	Affinity purification
Isotype	IgG
Recommend Usage	Flow Cytometry (1:60) Immunohistochemistry (1:50-1:200) Western Blot (1:500-1:2000) The optimal working dilution should be determined by the end user.
Storage Buffer	In PBS, 150 mM NaCl, pH 7.4 (50% glycerol, 0.02% sodium azide).

Storage Instruction

Store at -20°C for one year.
Aliquot to avoid repeated freezing and thawing.

Note

This product contains sodium azide: a POISONOUS AND HAZARDOUS SUBSTANCE which should be handled by trained staff only.

Applications

- Western Blot (Cell lysate)

Western Blot analysis of SPI1 in Daudi cell lysate.

- Immunohistochemistry

- Flow Cytometry

Gene Info — SPI1

Entrez GeneID
[6688](#)
Protein Accession#
[P17947](#)
Gene Name

SPI1

Gene Alias

OF, PU.1, SFPI1, SPI-1, SPIA

Gene Description

spleen focus forming virus (SFFV) proviral integration oncogene spi1

Omim ID
[165170](#)
Gene Ontology
[Hyperlink](#)
Gene Summary

This gene encodes an ETS-domain transcription factor that activates gene expression during myeloid and B-lymphoid cell development. The nuclear protein binds to a purine-rich sequence known as the PU-box found near the promoters of target genes, and regulates their expression in coordination with other transcription factors and cofactors. The protein can also regulate alternative splicing of target genes. Multiple transcript variants encoding different isoforms have been found for this gene. [provided by RefSeq]

Other Designations

31 kDa transforming protein|SPI-1 proto-oncogene|hematopoietic transcription factor PU.1

Pathway

- [Acute myeloid leukemia](#)

- [Pathways in cancer](#)

Disease

- [Leukemia](#)