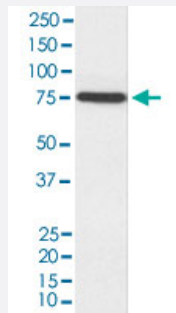


# MAP3K7 monoclonal antibody, clone ACHF-13

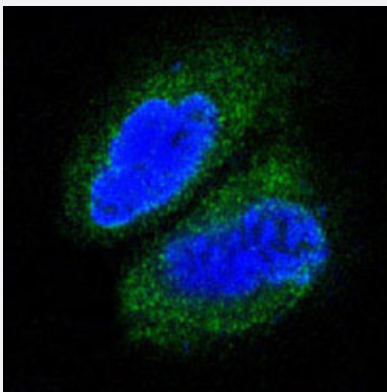
Catalog # MAB22148      Size 100 uL

## Applications



### Western Blot (Cell lysate)

Western blot analysis of HeLa cell lysate.



### Immunofluorescence

Immunofluorescence analysis of A-431 cells.

## Specification

<b>Product Description</b>	Rabbit monoclonal antibody raised against synthetic peptide of human MAP3K7.
<b>Immunogen</b>	A synthetic peptide corresponding to human MAP3K7.
<b>Host</b>	Rabbit
<b>Reactivity</b>	Human
<b>Specificity</b>	The antibody reacts with human MAP3K7, in native form and recombinant. Superfamily members of MAP3K7 are not reactive to this antibody.

Form	Liquid
Purification	Affinity purification
Isotype	IgG
Recommend Usage	Flow Cytometry (1:50) Immunocytochemistry (1:100-1:500) Immunofluorescence (1:100-1:500) Immunohistochemistry (1:50-1:200) Western Blot (1:500-1:2000) The optimal working dilution should be determined by the end user.
Storage Buffer	In PBS, 150 mM NaCl, pH 7.4 (50% glycerol, 0.02% sodium azide).
Storage Instruction	Store at 4°C for short term storage. For long term storage store at -20°C. Aliquot to avoid repeated freezing and thawing.
Note	This product contains sodium azide: a POISONOUS AND HAZARDOUS SUBSTANCE which should be handled by trained staff only.

## Applications

- Western Blot (Cell lysate)

Western blot analysis of HeLa cell lysate.

- Immunohistochemistry

- Immunocytochemistry

- Immunofluorescence

Immunofluorescence analysis of A-431 cells.

- Flow Cytometry

## Gene Info — MAP3K7

Entrez GeneID	<a href="#">6885</a>
Protein Accession#	<a href="#">O43318</a>
Gene Name	MAP3K7
Gene Alias	TAK1, TGF1a

Gene Description	mitogen-activated protein kinase kinase kinase 7
Omim ID	<a href="#">602614</a>
Gene Ontology	<a href="#">Hyperlink</a>
Gene Summary	The protein encoded by this gene is a member of the serine/threonine protein kinase family. This kinase mediates the signaling transduction induced by TGF beta and morphogenetic protein (BMP), and controls a variety of cell functions including transcription regulation and apoptosis. In response to IL-1, this protein forms a kinase complex including TRAF6, MAP3K7P1/TAB1 and MAP3K7P2/TAB2; this complex is required for the activation of nuclear factor kappa B. This kinase can also activate MAPK8/JNK, MAP2K4/MKK4, and thus plays a role in the cell response to environmental stresses. Four alternatively spliced transcript variants encoding distinct isoforms have been reported. [provided by RefSeq]
Other Designations	OTTHUMP00000016870 OTTHUMP00000016871 OTTHUMP00000016872 OTTHUMP00000016873 TGF-beta activated kinase 1 transforming growth factor-beta-activated kinase 1

## Pathway

- [Adherens junction](#)
- [MAPK signaling pathway](#)
- [T cell receptor signaling pathway](#)
- [Toll-like receptor signaling pathway](#)
- [Wnt signaling pathway](#)

## Disease

- [Arthritis](#)
- [Crohn Disease](#)
- [Genetic Predisposition to Disease](#)
- [Inflammatory Bowel Diseases](#)
- [Narcolepsy](#)
- [Tobacco Use Disorder](#)