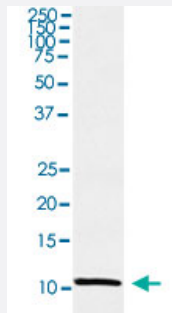


TFF1 monoclonal antibody, clone ADIB-20

Catalog # MAB22141 Size 100 uL

Applications



Western Blot (Cell lysate)

Western blot analysis of MCF-7 cell lysate.

Specification

Product Description	Rabbit monoclonal antibody raised against synthetic peptide of human TFF1.
Immunogen	A synthetic peptide corresponding to human TFF1.
Host	Rabbit
Reactivity	Human
Specificity	The antibody reacts with human TFF1, in native form and recombinant. Superfamily members of TFF 1 are not reactive to this antibody.
Form	Liquid
Purification	Affinity purification
Isotype	IgG

Recommend Usage	Flow Cytometry (1:50) Immunocytochemistry (1:50-1:200) Immunofluorescence (1:50-1:200) Immunohistochemistry (1:50-1:200) Immunoprecipitation (1:50) Western Blot (1:500-1:2000) The optimal working dilution should be determined by the end user.
Storage Buffer	In PBS, 150 mM NaCl, pH 7.4 (50% glycerol, 0.02% sodium azide).
Storage Instruction	Store at 4°C for short term storage. For long term storage store at -20°C. Aliquot to avoid repeated freezing and thawing.
Note	This product contains sodium azide: a POISONOUS AND HAZARDOUS SUBSTANCE which should be handled by trained staff only.

Applications

- Western Blot (Cell lysate)

Western blot analysis of MCF-7 cell lysate.

- Immunohistochemistry

- Immunocytochemistry

- Immunofluorescence

- Immunoprecipitation

- Flow Cytometry

Gene Info — TFF1

Entrez GeneID	7031
Protein Accession#	P04155
Gene Name	TFF1
Gene Alias	BCEI, D21S21, HP1.A, HPS2, pNR-2, pS2
Gene Description	trefoil factor 1

Omim ID [113710](#)

Gene Ontology [Hyperlink](#)

Gene Summary Members of the trefoil family are characterized by having at least one copy of the trefoil motif, a 40 -amino acid domain that contains three conserved disulfides. They are stable secretory proteins expressed in gastrointestinal mucosa. Their functions are not defined, but they may protect the mucosa from insults, stabilize the mucus layer, and affect healing of the epithelium. This gene, which is expressed in the gastric mucosa, has also been studied because of its expression in human tumors. This gene and two other related trefoil family member genes are found in a cluster on chromosome 21. [provided by RefSeq]

Other Designations breast cancer estrogen-inducible sequence|gastrointestinal trefoil protein pS2

Disease

- [Cerebral Hemorrhage](#)
- [Chronic Disease](#)
- [Genetic Predisposition to Disease](#)
- [Hypertension](#)
- [Intracranial Hemorrhages](#)
- [Kidney Calculi](#)
- [Kidney Diseases](#)
- [Lung Neoplasms](#)
- [Pulmonary Disease](#)
- [Stroke](#)
- [Subarachnoid Hemorrhage](#)
- [Urinary Bladder Neoplasms](#)
- [Werner syndrome](#)