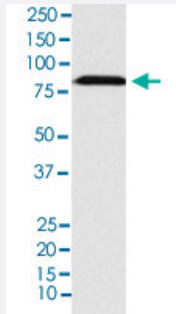


# FURIN monoclonal antibody, clone AEGA-6

Catalog # MAB22137      Size 100 uL

## Applications



### Western Blot (Cell lysate)

Western blot analysis of HepG2 cell lysate.

## Specification

<b>Product Description</b>	Rabbit monoclonal antibody raised against synthetic peptide of human FURIN.
<b>Immunogen</b>	A synthetic peptide corresponding to human FURIN.
<b>Host</b>	Rabbit
<b>Reactivity</b>	Human
<b>Specificity</b>	The antibody reacts with human FURIN, in native form and recombinant. Superfamily members of FURIN are not reactive to this antibody.
<b>Form</b>	Liquid
<b>Purification</b>	Affinity purification
<b>Isotype</b>	IgG
<b>Recommend Usage</b>	Immunocytochemistry (1:50-1:200) Immunofluorescence (1:50-1:200) Immunohistochemistry (1:50-1:200) Western Blot (1:500-1:2000) The optimal working dilution should be determined by the end user.

Storage Buffer	In PBS, 150 mM NaCl, pH 7.4 (50% glycerol, 0.02% sodium azide).
Storage Instruction	Store at 4°C for short term storage. For long term storage store at -20°C. Aliquot to avoid repeated freezing and thawing.
Note	This product contains sodium azide: a POISONOUS AND HAZARDOUS SUBSTANCE which should be handled by trained staff only.

## Applications

- Western Blot (Cell lysate)

Western blot analysis of HepG2 cell lysate.

- Immunohistochemistry

- Immunocytochemistry

- Immunofluorescence

## Gene Info — FURIN

Entrez GeneID	<a href="#">5045</a>
Protein Accession#	<a href="#">P09958</a>
Gene Name	FURIN
Gene Alias	FUR, PACE, PCSK3, SPC1
Gene Description	furin (paired basic amino acid cleaving enzyme)
Omim ID	<a href="#">136950</a>
Gene Ontology	<a href="#">Hyperlink</a>

Gene Summary	The protein encoded by this gene belongs to the subtilisin-like proprotein convertase family. The members of this family are proprotein convertases that process latent precursor proteins into their biologically active products. This encoded protein is a calcium-dependent serine endoprotease that can efficiently cleave precursor proteins at their paired basic amino acid processing sites. Some of its substrates are: parathyroid hormone, transforming growth factor beta 1 precursor, proalbumin, pro-beta-secretase, membrane type-1 matrix metalloproteinase, beta subunit of pro-neuronal growth factor and von Willebrand factor. It is also thought to be one of the proteases responsible for the activation of HIV envelope glycoproteins gp160 and gp140. This gene is thought to play a role in tumor progression. The use of alternate polyadenylation sites has been found for this gene. [provided by RefSeq]
--------------	---

**Other Designations**

FES upstream region|dibasic processing enzyme|furin|furin, membrane associated receptor protein|paired basic amino acid cleaving enzyme (furin, membrane associated receptor protein)|proprotein convertase subtilisin/kexin type 3

**Disease**

- [Cardiovascular Diseases](#)
- [Colonic Neoplasms](#)
- [Colorectal Neoplasms](#)
- [Diabetes Mellitus](#)
- [Disease Progression](#)
- [Edema](#)
- [Genetic Predisposition to Disease](#)
- [Hepatitis B](#)
- [Hypertension](#)
- [Liver Cirrhosis](#)
- [Rectal Neoplasms](#)