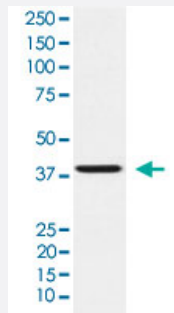


RNF2 monoclonal antibody, clone AEDC-18

Catalog # MAB22125 Size 100 uL

Applications



Western Blot (Cell lysate)

Western blot analysis of HeLa cell lysate.

Specification

Product Description	Rabbit monoclonal antibody raised against synthetic peptide of human RNF2.
Immunogen	A synthetic peptide corresponding to human RNF2.
Host	Rabbit
Reactivity	Human
Specificity	The antibody reacts with human RNF2, in native form and recombinant. Superfamily members of RNF2 are not reactive to this antibody.
Form	Liquid
Purification	Affinity purification
Isotype	IgG
Recommend Usage	Flow Cytometry (1:50) Immunocytochemistry (1:50-1:200) Immunofluorescence (1:50-1:200) Immunohistochemistry (1:50-1:200) Western Blot (1:500-1:2000) The optimal working dilution should be determined by the end user.

Storage Buffer	In PBS, 150 mM NaCl, pH 7.4 (50% glycerol, 0.02% sodium azide).
Storage Instruction	Store at 4°C for short term storage. For long term storage store at -20°C. Aliquot to avoid repeated freezing and thawing.
Note	This product contains sodium azide: a POISONOUS AND HAZARDOUS SUBSTANCE which should be handled by trained staff only.

Applications

- Western Blot (Cell lysate)

Western blot analysis of HeLa cell lysate.

- Immunohistochemistry
- Immunocytochemistry
- Immunofluorescence
- Flow Cytometry

Gene Info — RNF2

Entrez GeneID	6045
Protein Accession#	Q99496
Gene Name	RNF2
Gene Alias	BAP-1, BAP1, DING, HIP13, RING1B, RING2
Gene Description	ring finger protein 2
Omim ID	608985
Gene Ontology	Hyperlink

Gene Summary

Polycomb group (PcG) of proteins form the multiprotein complexes that are important for the transcription repression of various genes involved in development and cell proliferation. The protein encoded by this gene is one of the PcG proteins. It has been shown to interact with, and suppress the activity of, transcription factor CP2 (TFCP2/CP2). Studies of the mouse counterpart suggested the involvement of this gene in the specification of anterior-posterior axis, as well as in cell proliferation in early development. This protein was also found to interact with huntingtin interacting protein 2 (HIP2), an ubiquitin-conjugating enzyme, and possess ubiquitin ligase activity. [provided by RefSeq]

Other Designations

OTTHUMP00000033405|OTTHUMP00000060668

Disease

- [Carcinoma](#)
- [Genetic Predisposition to Disease](#)
- [Head and Neck Neoplasms](#)
- [Neoplasms](#)
- [Recurrence](#)