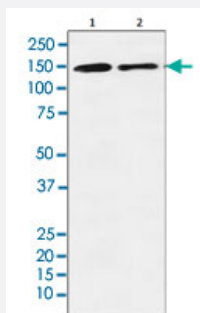


SIN3A monoclonal antibody, clone ACEE-19

Catalog # MAB22124 Size 100 uL

Applications



Western Blot (Cell lysate)

Western blot analysis of Lane 1: K562 cell lysate and Lane 2: RAW 264.7 cell lysate.

Specification

Product Description	Rabbit monoclonal antibody raised against synthetic peptide of human SIN3A.
Immunogen	A synthetic peptide corresponding to human SIN3A.
Host	Rabbit
Reactivity	Human, Mouse
Specificity	The antibody reacts with human, mouse SIN3A, in native form and recombinant. Superfamily members of SIN3A are not reactive to this antibody.
Form	Liquid
Purification	Affinity purification
Isotype	IgG
Recommend Usage	<p>Flow Cytometry (1:50)</p> <p>Immunocytochemistry (1:50-1:200)</p> <p>Immunofluorescence (1:50-1:200)</p> <p>Immunohistochemistry (1:50-1:200)</p> <p>Western Blot (1:500-1:2000)</p> <p>The optimal working dilution should be determined by the end user.</p>

Storage Buffer	In PBS, 150 mM NaCl, pH 7.4 (50% glycerol, 0.02% sodium azide).
Storage Instruction	Store at 4°C for short term storage. For long term storage store at -20°C. Aliquot to avoid repeated freezing and thawing.
Note	This product contains sodium azide: a POISONOUS AND HAZARDOUS SUBSTANCE which should be handled by trained staff only.

Applications

- Western Blot (Cell lysate)

Western blot analysis of Lane 1: K562 cell lysate and Lane 2: RAW 264.7 cell lysate.

- Immunohistochemistry
- Immunocytochemistry
- Immunofluorescence
- Flow Cytometry

Gene Info — SIN3A

Entrez GeneID	25942
Protein Accession#	Q96ST3
Gene Name	SIN3A
Gene Alias	DKFZp434K2235, FLJ90319, KIAA0700
Gene Description	SIN3 homolog A, transcription regulator (yeast)
Omim ID	607776
Gene Ontology	Hyperlink
Gene Summary	The protein encoded by this gene is a transcriptional regulatory protein. It contains paired amphipathic helix (PAH) domains, which are important for protein-protein interactions and may mediate repression by the Mad-Max complex. [provided by RefSeq]
Other Designations	OTTHUMP00000183517 OTTHUMP00000183518 SIN3 homolog A, transcriptional regulator transcriptional co-repressor Sin3A transcriptional regulator, SIN3A