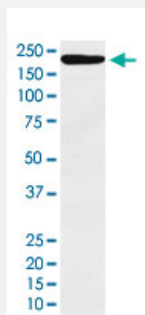


# IQGAP1 monoclonal antibody, clone ADGG-9

Catalog # MAB22108

Size 100 uL

## Applications



### Western Blot (Cell lysate)

Western Blot (cell lysate) analysis of HeLa cell lysate.

## Specification

|                            |  |
|----------------------------|--|
| <b>Product Description</b> | Rabbit monoclonal antibody raised against synthetic protein of human IQGAP1.   |
| <b>Immunogen</b>           | A synthetic peptide corresponding to human IQGAP1.   |
| <b>Host</b>                | Rabbit   |
| <b>Reactivity</b>          | Human, Mouse   |
| <b>Specificity</b>         | This antibody reacts with human, mouse IQGAP1, in native form and recombinant. Superfamily members of IQGAP1 are not reactive to antibody.   |
| <b>Form</b>                | Liquid   |
| <b>Purification</b>        | Affinity purification  |
| <b>Isotype</b>             | IgG  |
| <b>Recommend Usage</b>     | Flow Cytometry (1:50)<br>Immunohistochemistry (Formalin/PFA-fixed paraffin-embedded sections) (1:50-200)<br>Immunofluorescence (1:50-200)<br>Immunocytochemistry (1:50-200)<br>Western Blot (1:500-2000)<br>The optimal working dilution should be determined by the end user. |

|                     |  |
|---------------------|--|
| Storage Buffer      | In PBS, 150 mM NaCl, pH 7.4 (50% glycerol, 0.02% sodium azide).  |
| Storage Instruction | Store at 4°C. For long term storage store at -20°C.<br>Aliquot to avoid repeated freezing and thawing.                 |
| Note                | This product contains sodium azide: a POISONOUS AND HAZARDOUS SUBSTANCE which should be handled by trained staff only. |

## Applications

- Western Blot (Cell lysate)

Western Blot (cell lysate) analysis of HeLa cell lysate.

- Immunohistochemistry (Formalin/PFA-fixed paraffin-embedded sections)

- Immunocytochemistry

- Immunofluorescence

- Flow Cytometry

## Gene Info — IQGAP1

|                    |  |
|--------------------|--|
| Entrez GeneID      | <a href="#">8826</a>   |
| Protein Accession# | <a href="#">P46940</a>   |
| Gene Name          | IQGAP1   |
| Gene Alias         | HUMORFA01, KIAA0051, SAR1, p195  |
| Gene Description   | IQ motif containing GTPase activating protein 1  |
| Omim ID            | <a href="#">603379</a>   |
| Gene Ontology      | <a href="#">Hyperlink</a>  |
| Gene Summary       | This gene encodes a member of the IQGAP family. The protein contains four IQ domains, one calponin homology domain, one Ras-GAP domain and one WW domain. It interacts with components of the cytoskeleton, with cell adhesion molecules, and with several signaling molecules to regulate cell morphology and motility. Expression of the protein is upregulated by gene amplification in two gastric cancer cell lines. [provided by RefSeq] |
| Other Designations | RasGAP-like with IQ motifs   |

## Pathway

- [Adherens junction](#)
- [Regulation of actin cytoskeleton](#)