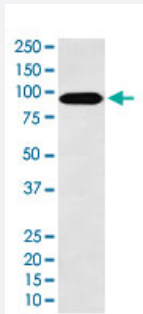


CUL4A monoclonal antibody, clone AEIH-3

Catalog # MAB22103 Size 100 uL

Applications



Western Blot (Cell lysate)

Western Blot (cell lysate) analysis of HeLa cell lysate.

Specification

Product Description	Rabbit monoclonal antibody raised against synthetic protein of human CUL4A.
Immunogen	A synthetic peptide corresponding to human CUL4A.
Host	Rabbit
Reactivity	Human
Specificity	This antibody reacts with human CUL4A, in native form and recombinant. Superfamily members of CUL4A are not reactive to antibody.
Form	Liquid
Purification	Affinity purification
Isotype	IgG

Recommend Usage	Flow Cytometry (1:50) Immunohistochemistry (Formalin/PFA-fixed paraffin-embedded sections) (1:100-500) Immunofluorescence (1:50-200) Immunocytochemistry (1:50-200) Immunoprecipitation (1:50) Western Blot (1:1000-5000) The optimal working dilution should be determined by the end user.
Storage Buffer	In PBS, 150 mM NaCl, pH 7.4 (50% glycerol, 0.02% sodium azide).
Storage Instruction	Store at 4°C. For long term storage store at -20°C. Aliquot to avoid repeated freezing and thawing.
Note	This product contains sodium azide: a POISONOUS AND HAZARDOUS SUBSTANCE which should be handled by trained staff only.

Applications

- Western Blot (Cell lysate)
Western Blot (cell lysate) analysis of HeLa cell lysate.
- Immunohistochemistry (Formalin/PFA-fixed paraffin-embedded sections)
- Immunocytochemistry
- Immunofluorescence
- Immunoprecipitation
- Flow Cytometry

Gene Info — CUL4A

Entrez GeneID	8451
Protein Accession#	Q13619
Gene Name	CUL4A
Gene Alias	-
Gene Description	cullin 4A

Omim ID	603137
Gene Ontology	Hyperlink
Other Designations	OTTHUMP00000018753 OTTHUMP00000018754

Pathway

- [Nucleotide excision repair](#)
- [Ubiquitin mediated proteolysis](#)