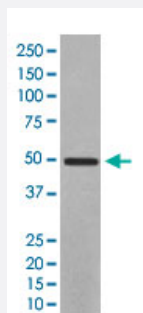


YBX1 monoclonal antibody, clone DDB-25

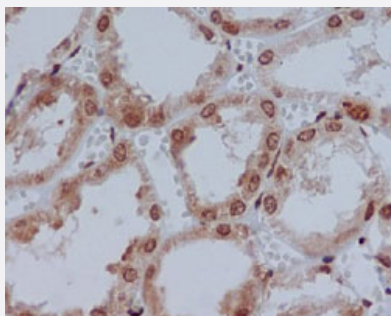
Catalog # MAB22100 Size 100 uL

Applications



Western Blot (Cell lysate)

Western Blot (cell lysate) analysis of HeLa cell lysate.



Immunohistochemistry (Formalin/PFA-fixed paraffin-embedded sections)

Immunohistochemical staining of human kidney.

Specification

Product Description	Rabbit monoclonal antibody raised against synthetic protein of human YBX1.
Immunogen	A synthetic peptide corresponding to human YBX1.
Host	Rabbit
Reactivity	Human, Mouse, Rat
Specificity	This antibody reacts with human, mouse, rat YBX1, in native form and recombinant. Superfamily members of YBX1 are not reactive to antibody.
Form	Liquid

Purification	Affinity purification
Isotype	IgG
Recommend Usage	Immunohistochemistry (Formalin/PFA-fixed paraffin-embedded sections) (1:50-200) Immunofluorescence (1:50-200) Immunocytochemistry (1:50-200) Immunoprecipitation (1:50) Western Blot (1:500-2000) The optimal working dilution should be determined by the end user.
Storage Buffer	In PBS, 150 mM NaCl, pH 7.4 (50% glycerol, 0.02% sodium azide).
Storage Instruction	Store at -20°C. Aliquot to avoid repeated freezing and thawing.
Note	This product contains sodium azide: a POISONOUS AND HAZARDOUS SUBSTANCE which should be handled by trained staff only.

Applications

- Western Blot (Cell lysate)

Western Blot (cell lysate) analysis of HeLa cell lysate.

- Immunohistochemistry (Formalin/PFA-fixed paraffin-embedded sections)

Immunohistochemical staining of human kidney.

- Immunocytochemistry

- Immunofluorescence

- Immunoprecipitation

Gene Info — YBX1

Entrez GeneID	4904
Protein Accession#	P67809
Gene Name	YBX1
Gene Alias	BP-8, CSDA2, CSDB, DBPB, MDR-NF1, MGC104858, MGC110976, MGC117250, NSEP-1, NSEP1, YB-1, YB1

Gene Description	Y box binding protein 1
Omim ID	154030
Gene Ontology	Hyperlink
Gene Summary	class II
Other Designations	DNA-binding protein B OTTHUMP00000008731 major histocompatibility complex, class II, Y box-binding protein II nuclease sensitive element binding protein 1