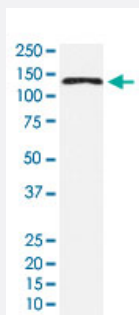


# NEDD4 monoclonal antibody, clone AEGB-14

Catalog # MAB22093      Size 100 uL

## Applications



### Western Blot (Cell lysate)

Western Blot (cell lysate) analysis of A-549 cell lysate.

## Specification

<b>Product Description</b>	Rabbit monoclonal antibody raised against synthetic protein of human NEDD4.
<b>Immunogen</b>	A synthetic peptide corresponding to human NEDD4.
<b>Host</b>	Rabbit
<b>Reactivity</b>	Human, Mouse, Rat
<b>Specificity</b>	This antibody reacts with human, mouse, rat NEDD4, in native form and recombinant. Superfamily members of NEDD4 are not reactive to antibody.
<b>Form</b>	Liquid
<b>Purification</b>	Affinity purification
<b>Isotype</b>	IgG
<b>Recommend Usage</b>	Flow Cytometry (1:50) Immunoprecipitation (1:50) Western Blot (1:1000-5000) The optimal working dilution should be determined by the end user.
<b>Storage Buffer</b>	In PBS, 150 mM NaCl, pH 7.4 (50% glycerol, 0.02% sodium azide).

**Storage Instruction**

Store at 4°C. For long term storage store at -20°C.  
Aliquot to avoid repeated freezing and thawing.

**Note**

This product contains sodium azide: a POISONOUS AND HAZARDOUS SUBSTANCE which should be handled by trained staff only.

## Applications

- Western Blot (Cell lysate)

Western Blot (cell lysate) analysis of A-549 cell lysate.

- Immunoprecipitation

- Flow Cytometry

## Gene Info — NEDD4

**Entrez GeneID**[4734](#)**Protein Accession#**[P46934](#)**Gene Name**

NEDD4

**Gene Alias**

KIAA0093, MGC176705, NEDD4-1, RPF1

**Gene Description**

neural precursor cell expressed, developmentally down-regulated 4

**Omim ID**[602278](#)**Gene Ontology**[Hyperlink](#)**Gene Summary**

O

**Other Designations**

receptor-potentiating factor 1

## Pathway

- [Endocytosis](#)

- [Ubiquitin mediated proteolysis](#)

## Disease

- [Genetic Predisposition to Disease](#)
- [Keloid](#)