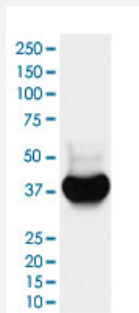


# BST2 monoclonal antibody, clone ACCD-2

Catalog # MAB22092      Size 100 uL

## Applications



### Western Blot (Cell lysate)

Western Blot (cell lysate) analysis of HeLa cell lysate.

## Specification

<b>Product Description</b>	Rabbit monoclonal antibody raised against synthetic protein of human BST2.
<b>Immunogen</b>	A synthetic peptide corresponding to human BST2.
<b>Host</b>	Rabbit
<b>Reactivity</b>	Human
<b>Specificity</b>	This antibody reacts with human BST2, in native form and recombinant. Superfamily members of BS T2 are not reactive to antibody.
<b>Form</b>	Liquid
<b>Purification</b>	Affinity purification
<b>Isotype</b>	IgG
<b>Recommend Usage</b>	Flow Cytometry (1:50) Immunohistochemistry (Formalin/PFA-fixed paraffin-embedded sections) (1:50-200) Western Blot (1:500-2000) The optimal working dilution should be determined by the end user.
<b>Storage Buffer</b>	In PBS, 150 mM NaCl, pH 7.4 (50% glycerol, 0.02% sodium azide).

**Storage Instruction**

Store at 4°C. For long term storage store at -20°C.  
Aliquot to avoid repeated freezing and thawing.

**Note**

This product contains sodium azide: a POISONOUS AND HAZARDOUS SUBSTANCE which should be handled by trained staff only.

## Applications

- Western Blot (Cell lysate)

Western Blot (cell lysate) analysis of HeLa cell lysate.

- Immunohistochemistry (Formalin/PFA-fixed paraffin-embedded sections)

- Flow Cytometry

## Gene Info — BST2

**Entrez GeneID**[684](#)**Protein Accession#**[Q10589](#)**Gene Name**

BST2

**Gene Alias**

CD317

**Gene Description**

bone marrow stromal cell antigen 2

**Omim ID**[600534](#)**Gene Ontology**[Hyperlink](#)**Gene Summary**

Bone marrow stromal cells are involved in the growth and development of B-cells. The specific function of the protein encoded by the bone marrow stromal cell antigen 2 is undetermined; however, this protein may play a role in pre-B-cell growth and in rheumatoid arthritis. [provided by RefSeq]

**Other Designations**

tetherin

## Disease

- [Genetic Predisposition to Disease](#)

- [Ovarian Neoplasms](#)