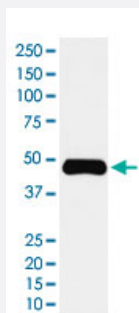


ETS1 monoclonal antibody, clone ADAO-5

Catalog # MAB22091 Size 100 uL

Applications



Western Blot (Cell lysate)

Western Blot (cell lysate) analysis of Daudi cell lysate.

Specification

Product Description	Rabbit monoclonal antibody raised against synthetic protein of human ETS1.
Immunogen	A synthetic peptide corresponding to human ETS1.
Host	Rabbit
Reactivity	Human, Mouse
Specificity	This antibody reacts with human, mouse ETS1, in native form and recombinant. Superfamily members of ETS1 are not reactive to antibody.
Form	Liquid
Purification	Affinity purification
Isotype	IgG
Recommend Usage	Flow Cytometry (1:80) Western Blot (1:500-2000) The optimal working dilution should be determined by the end user.
Storage Buffer	In PBS, 150 mM NaCl, pH 7.4 (50% glycerol, 0.02% sodium azide).

Storage Instruction

Store at 4°C. For long term storage store at -20°C.
Aliquot to avoid repeated freezing and thawing.

Note

This product contains sodium azide: a POISONOUS AND HAZARDOUS SUBSTANCE which should be handled by trained staff only.

Applications

- Western Blot (Cell lysate)

Western Blot (cell lysate) analysis of Daudi cell lysate.

- Flow Cytometry

Gene Info — ETS1

Entrez GeneID[2113](#)**Protein Accession#**[P14921](#)**Gene Name**

ETS1

Gene Alias

ETS-1, EWSR2, FLJ10768

Gene Description

v-ets erythroblastosis virus E26 oncogene homolog 1 (avian)

Omim ID[164720](#)**Gene Ontology**[Hyperlink](#)**Gene Summary**

ETS transcriptions factors, such as ETS1, regulate numerous genes and are involved in stem cell development, cell senescence and death, and tumorigenesis. The conserved ETS domain within these proteins is a winged helix-turn-helix DNA-binding domain that recognizes the core consensus DNA sequence GGAA/T of target genes (Dwyer et al., 2007 [PubMed 17986575]).[supplied by OMIM]

Other Designations

Avian erythroblastosis virus E26 (v-ets) oncogene homolog-1|ets protein|v-ets avian erythroblastosis virus E2 oncogene homolog 1|v-ets avian erythroblastosis virus E26 oncogene homolog 1|v-ets erythroblastosis virus E26 oncogene homolog 1

Pathway

- [Dorso-ventral axis formation](#)

- [Pathways in cancer](#)
- [Renal cell carcinoma](#)

Disease

- [Genetic Predisposition to Disease](#)
- [Lupus Erythematosus](#)
- [Lupus Nephritis](#)