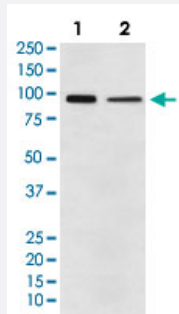


EEF2 monoclonal antibody, clone ADBH-5

Catalog # MAB22084 Size 100 uL

Applications



Western Blot

Western Blot analysis of (1) A431, (2) NIH/3T3 cell lysates.

Specification

Product Description	Rabbit monoclonal antibody raised against synthetic protein of human EEF2.
Immunogen	A synthetic peptide corresponding to human EEF2.
Host	Rabbit
Reactivity	Human, Mouse, Rat
Specificity	This antibody reacts with human, mouse, rat EEF2, in native form and recombinant. Superfamily members of EEF2 are not reactive to antibody.
Form	Liquid
Purification	Affinity purification
Isotype	IgG

Recommend Usage

Flow Cytometry (1:50)
Immunohistochemistry (Formalin/PFA-fixed paraffin-embedded sections) (1:50-200)
Immunofluorescence (1:50-200)
Immunocytochemistry (1:50-200)
Immunoprecipitation (1:20)
Western Blot (1:1000-5000)
The optimal working dilution should be determined by the end user.

Storage Buffer

In PBS, 150 mM NaCl, pH 7.4 (50% glycerol, 0.02% sodium azide).

Storage Instruction

Store at 4°C. For long term storage store at -20°C.
Aliquot to avoid repeated freezing and thawing.

Note

This product contains sodium azide: a POISONOUS AND HAZARDOUS SUBSTANCE which should be handled by trained staff only.

Applications

- Western Blot

Western Blot analysis of (1) A431, (2) NIH/3T3 cell lysates.

- Immunohistochemistry (Formalin/PFA-fixed paraffin-embedded sections)

- Immunocytochemistry

- Immunofluorescence

- Immunoprecipitation

- Flow Cytometry

Gene Info — EEF2

Entrez GeneID

[1938](#)

Protein Accession#

[P13639](#)

Gene Name

EEF2

Gene Alias

EEF-2, EF2

Gene Description

eukaryotic translation elongation factor 2

Omim ID [130610](#)

Gene Ontology [Hyperlink](#)

Gene Summary This gene encodes a member of the GTP-binding translation elongation factor family. This protein is an essential factor for protein synthesis. It promotes the GTP-dependent translocation of the nascent protein chain from the A-site to the P-site of the ribosome. This protein is completely inactivated by EF-2 kinase phosphorylation. [provided by RefSeq]

Other Designations polypeptidyl-tRNA translocase

Disease

- [Tobacco Use Disorder](#)