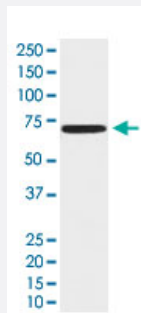


ZAP70 monoclonal antibody, clone ACAF-26

Catalog # MAB22079 Size 100 uL

Applications



Western Blot (Cell lysate)

Western Blot (cell lysate) analysis of Jurkat cell lysate.

Specification

Product Description	Rabbit monoclonal antibody raised against synthetic protein of human ZAP70.
Immunogen	A synthetic peptide corresponding to human ZAP70.
Host	Rabbit
Reactivity	Human
Specificity	This antibody reacts with human ZAP70, in native form and recombinant. Superfamily members of ZAP70 are not reactive to antibody.
Form	Liquid
Purification	Affinity purification
Isotype	IgG

Recommend Usage	Flow Cytometry (1:50) Immunohistochemistry (Formalin/PFA-fixed paraffin-embedded sections) (1:50-200) Immunofluorescence (1:50-200) Immunocytochemistry (1:50-200) Immunoprecipitation (1:50) Western Blot (1:500-1000) The optimal working dilution should be determined by the end user.
Storage Buffer	In PBS, 150 mM NaCl, pH 7.4 (50% glycerol, 0.02% sodium azide).
Storage Instruction	Store at 4°C. For long term storage store at -20°C. Aliquot to avoid repeated freezing and thawing.
Note	This product contains sodium azide: a POISONOUS AND HAZARDOUS SUBSTANCE which should be handled by trained staff only.

Applications

- Western Blot (Cell lysate)
Western Blot (cell lysate) analysis of Jurkat cell lysate.
- Immunohistochemistry (Formalin/PFA-fixed paraffin-embedded sections)
- Immunocytochemistry
- Immunofluorescence
- Immunoprecipitation
- Flow Cytometry

Gene Info — ZAP70

Entrez GeneID	7535
Protein Accession#	P43403
Gene Name	ZAP70
Gene Alias	FLJ17670, FLJ17679, SRK, STD, TZK, ZAP-70
Gene Description	zeta-chain (TCR) associated protein kinase 70kDa

Omim ID [176947](#)

Gene Ontology [Hyperlink](#)

Gene Summary

This gene encodes an enzyme belonging to the protein tyrosine kinase family, and it plays a role in T-cell development and lymphocyte activation. This enzyme, which is phosphorylated on tyrosine residues upon T-cell antigen receptor (TCR) stimulation, functions in the initial step of TCR-mediated signal transduction in combination with the Src family kinases, Lck and Fyn. This enzyme is also essential for thymocyte development. Mutations in this gene cause selective T-cell defect, a severe combined immunodeficiency disease characterized by a selective absence of CD8-positive T-cells. Two transcript variants that encode different isoforms have been found for this gene. [provided by RefSeq]

Other Designations

syk-related tyrosine kinase|zeta-chain (TCR) associated protein kinase (70 kD)|zeta-chain associated protein kinase 70kDa|zeta-chain associated protein kinase, 70kD

Pathway

- [Natural killer cell mediated cytotoxicity](#)
- [Primary immunodeficiency](#)
- [T cell receptor signaling pathway](#)

Disease

- [HIV Infections](#)