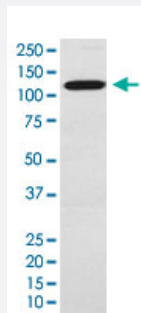


# BCL11A monoclonal antibody, clone ADFD-2

Catalog # MAB22077      Size 100 uL

## Applications



### Western Blot (Cell lysate)

Western Blot (cell lysate) analysis of Jurkat cell lysate.

## Specification

<b>Product Description</b>	Rabbit monoclonal antibody raised against synthetic protein of human BCL11A.
<b>Immunogen</b>	A synthetic peptide corresponding to human BCL11A.
<b>Host</b>	Rabbit
<b>Reactivity</b>	Human, Mouse, Rat
<b>Specificity</b>	This antibody reacts with human, mouse, rat BCL11A, in native form and recombinant. Superfamily members of BCL11A are not reactive to antibody.
<b>Form</b>	Liquid
<b>Purification</b>	Affinity purification
<b>Isotype</b>	IgG
<b>Recommend Usage</b>	Flow Cytometry (1:100) Immunohistochemistry (Formalin/PFA-fixed paraffin-embedded sections) (1:50-200) Immunofluorescence (1:50-200) Immunocytochemistry (1:50-200) Western Blot (1:1000-5000) The optimal working dilution should be determined by the end user.

Storage Buffer	In PBS, 150 mM NaCl, pH 7.4 (50% glycerol, 0.02% sodium azide).
Storage Instruction	Store at 4°C. For long term storage store at -20°C. Aliquot to avoid repeated freezing and thawing.
Note	This product contains sodium azide: a POISONOUS AND HAZARDOUS SUBSTANCE which should be handled by trained staff only.

## Applications

- Western Blot (Cell lysate)

Western Blot (cell lysate) analysis of Jurkat cell lysate.

- Immunohistochemistry (Formalin/PFA-fixed paraffin-embedded sections)

- Immunocytochemistry

- Immunofluorescence

- Flow Cytometry

## Gene Info — BCL11A

Entrez GeneID	<a href="#">53335</a>
Protein Accession#	<a href="#">Q9H165</a>
Gene Name	BCL11A
Gene Alias	BCL11A-L, BCL11A-S, BCL11A-XL, CTIP1, EVI9, FLJ10173, FLJ34997, HBFQTL5, KIAA1809, ZNF856
Gene Description	B-cell CLL/lymphoma 11A (zinc finger protein)
Omim ID	<a href="#">142335</a> <a href="#">606557</a>
Gene Ontology	<a href="#">Hyperlink</a>

**Gene Summary**

This gene encodes a C2H2 type zinc-finger protein by its similarity to the mouse Bcl11a/Evi9 protein. The corresponding mouse gene is a common site of retroviral integration in myeloid leukemia, and may function as a leukemia disease gene, in part, through its interaction with BCL6. During hematopoietic cell differentiation, this gene is down-regulated. It is possibly involved in lymphoma pathogenesis since translocations associated with B-cell malignancies also deregulate its expression. Multiple transcript variants encoding several different isoforms have been found for this gene. [provided by RefSeq]

**Other Designations**

B-cell CLL/lymphoma 11A|C2H2-type zinc finger protein|ecotropic viral integration site 9 homolog

**Disease**

- [alpha-Thalassemia](#)
- [Anemia](#)
- [beta-Thalassemia](#)
- [Cardiovascular Diseases](#)
- [Diabetes Mellitus](#)
- [Edema](#)
- [Genetic Predisposition to Disease](#)
- [Obesity](#)
- [Pain](#)
- [Prediabetic State](#)
- [Thalassemia](#)
- [Tobacco Use Disorder](#)