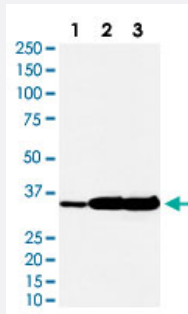


# ELAVL1 monoclonal antibody, clone ADHI-5

Catalog # MAB22076      Size 100 uL

## Applications



### Western Blot

Western Blot analysis of (1) Jurkat cell lysate, (2) Mouse heart lysate, (3) Rat spleen lysate.

## Specification

<b>Product Description</b>	Rabbit monoclonal antibody raised against synthetic protein of human ELAVL1.
<b>Immunogen</b>	A synthetic peptide corresponding to human ELAVL1.
<b>Host</b>	Rabbit
<b>Reactivity</b>	Human, Mouse, Rat
<b>Specificity</b>	This antibody reacts with human, mouse, rat ELAVL1, in native form and recombinant. Superfamily members of ELAVL1 are not reactive to antibody.
<b>Form</b>	Liquid
<b>Purification</b>	Affinity purification
<b>Isotype</b>	IgG

**Recommend Usage**

Flow Cytometry (1:50)  
Immunohistochemistry (Formalin/PFA-fixed paraffin-embedded sections) (1:50-200)  
Immunofluorescence (1:50-200)  
Immunocytochemistry (1:50-200)  
Immunoprecipitation (1:40)  
Western Blot (1:500-1000)  
The optimal working dilution should be determined by the end user.

**Storage Buffer**

In PBS, 150 mM NaCl, pH 7.4 (50% glycerol, 0.02% sodium azide).

**Storage Instruction**

Store at -20°C.  
Aliquot to avoid repeated freezing and thawing.

**Note**

This product contains sodium azide: a POISONOUS AND HAZARDOUS SUBSTANCE which should be handled by trained staff only.

## Applications

- Western Blot

Western Blot analysis of (1) Jurkat cell lysate, (2) Mouse heart lysate, (3) Rat spleen lysate.

- Immunohistochemistry (Formalin/PFA-fixed paraffin-embedded sections)

- Immunocytochemistry

- Immunofluorescence

- Immunoprecipitation

- Flow Cytometry

## Gene Info — ELAVL1

**Entrez GeneID**

[1994](#)

**Protein Accession#**

[Q15717](#)

**Gene Name**

ELAVL1

**Gene Alias**

ELAV1, HUR, Hua, MeIG

**Gene Description**

ELAV (embryonic lethal, abnormal vision, Drosophila)-like 1 (Hu antigen R)

**Omim ID** [603466](#)

**Gene Ontology** [Hyperlink](#)

**Gene Summary** The protein encoded by this gene is a member of the ELAVL protein family. This encoded protein contains 3 RNA-binding domains and binds cis-acting AU-rich elements. It destabilizes mRNAs and thereby regulates gene expression. [provided by RefSeq]

**Other Designations** ELAV-like 1|Hu antigen R|embryonic lethal, abnormal vision, drosophila, homolog-like 1

## Disease

- [Cardiovascular Diseases](#)
- [Diabetes Mellitus](#)
- [Edema](#)