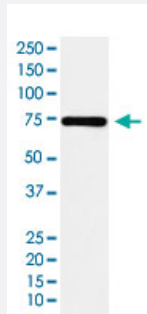


SAMHD1 monoclonal antibody, clone AEEA-19

Catalog # MAB22066 Size 100 uL

Applications



Western Blot (Cell lysate)

Western Blot (cell lysate) analysis of MCF7 cell lysate.

Specification

Product Description	Rabbit monoclonal antibody raised against synthetic protein of human SAMHD1.
Immunogen	A synthetic peptide corresponding to human SAMHD1.
Host	Rabbit
Reactivity	Human
Specificity	This antibody reacts with human SAMHD1, in native form and recombinant. Superfamily members of SAMHD1 are not reactive to antibody.
Form	Liquid
Purification	Affinity purification
Isotype	IgG
Recommend Usage	Immunohistochemistry (Formalin/PFA-fixed paraffin-embedded sections) (1:50-200) Immunofluorescence (1:50-200) Immunocytochemistry (1:50-200) Western Blot (1:1000-5000) The optimal working dilution should be determined by the end user.

Storage Buffer	In PBS, 150 mM NaCl, pH 7.4 (50% glycerol, 0.02% sodium azide).
Storage Instruction	Store at 4°C. For long term storage store at -20°C. Aliquot to avoid repeated freezing and thawing.
Note	This product contains sodium azide: a POISONOUS AND HAZARDOUS SUBSTANCE which should be handled by trained staff only.

Applications

- Western Blot (Cell lysate)

Western Blot (cell lysate) analysis of MCF7 cell lysate.

- Immunohistochemistry (Formalin/PFA-fixed paraffin-embedded sections)

- Immunocytochemistry

- Immunofluorescence

Gene Info — SAMHD1

Entrez GeneID	25939
Protein Accession#	Q9Y3Z3
Gene Name	SAMHD1
Gene Alias	DCIP, HDDC1, MOP-5, SBB188
Gene Description	SAM domain and HD domain 1
Omim ID	606754
Gene Ontology	Hyperlink
Other Designations	HD domain containing 1 OTTHUMP00000030889 SAM domain- and HD domain-containing protein 1 dendritic cell-derived IFNG-induced protein monocyte protein 5