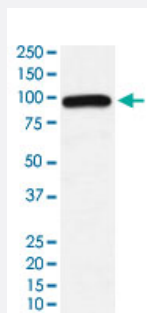


UBE3A monoclonal antibody, clone ADBA-21

Catalog # MAB22065

Size 100 uL

Applications



Western Blot (Cell lysate)

Western Blot (cell lysate) analysis of K-562 cell lysate.

Specification

Product Description	Rabbit monoclonal antibody raised against synthetic protein of human UBE3A.
Immunogen	A synthetic peptide corresponding to human UBE3A.
Host	Rabbit
Reactivity	Human, Mouse, Rat
Specificity	This antibody reacts with human, mouse, rat UBE3A, in native form and recombinant. Superfamily members of UBE3A are not reactive to antibody.
Form	Liquid
Purification	Affinity purification
Isotype	IgG
Recommend Usage	Western Blot (1:500-2000) The optimal working dilution should be determined by the end user.
Storage Buffer	In PBS, 150 mM NaCl, pH 7.4 (50% glycerol, 0.02% sodium azide).

Storage Instruction

Store at 4°C. For long term storage store at -20°C.
Aliquot to avoid repeated freezing and thawing.

Note

This product contains sodium azide: a POISONOUS AND HAZARDOUS SUBSTANCE which should be handled by trained staff only.

Applications

- Western Blot (Cell lysate)

Western Blot (cell lysate) analysis of K-562 cell lysate.

Gene Info — UBE3A

Entrez GeneID[7337](#)**Protein Accession#**[Q05086](#)**Gene Name**

UBE3A

Gene Alias

ANCR, AS, E6-AP, EPVE6AP, FLJ26981, HPVE6A

Gene Description

ubiquitin protein ligase E3A

Omim ID[105830 601623](#)**Gene Ontology**[Hyperlink](#)**Gene Summary**

This gene encodes an E3 ubiquitin-protein ligase, part of the ubiquitin protein degradation system. This imprinted gene is maternally expressed in brain and biallelically expressed in other tissues. Maternally inherited deletion of this gene causes Angelman Syndrome, characterized by severe motor and intellectual retardation, ataxia, hypotonia, epilepsy, absence of speech, and characteristic facies. The protein also interacts with the E6 protein of human papillomavirus types 16 and 18, resulting in ubiquitination and proteolysis of tumor protein p53. Alternative splicing of this gene results in three transcript variants encoding three isoforms with different N-termini. Additional transcript variants have been described, but their full length nature has not been determined. [provided by RefSeq]

Other Designations

CTCL tumor antigen se37-2|human papilloma virus E6-associated protein|oncogenic protein-associated protein E6-AP

Pathway

- [Ubiquitin mediated proteolysis](#)

Disease

- [Attention Deficit Disorder with Hyperactivity](#)
- [Autistic Disorder](#)
- [Genetic Predisposition to Disease](#)
- [Mental Disorders](#)
- [NARP](#)
- [Tuberculosis](#)