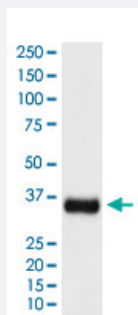


SRSF1 monoclonal antibody, clone ADGH-19

Catalog # MAB22049 Size 100 uL

Applications



Western Blot (Tissue lysate)

Western Blot analysis of mouse spleen lysate.

Specification

Product Description	Rabbit monoclonal antibody raised against synthetic protein of human SRSF1.
Immunogen	A synthetic peptide corresponding to human SRSF1.
Host	Rabbit
Reactivity	Human, Mouse, Rat
Specificity	This antibody reacts with human, mouse, rat SRSF1, in native form and recombinant. Superfamily members of SRSF1 are not reactive to antibody.
Form	Liquid
Purification	Affinity purification
Isotype	IgG
Recommend Usage	<p>Flow Cytometry (1:50)</p> <p>Immunohistochemistry (Formalin/PFA-fixed paraffin-embedded sections) (1:100-500)</p> <p>Immunofluorescence (1:50-200)</p> <p>Immunocytochemistry (1:50-200)</p> <p>Western Blot (1:500-2000)</p> <p>The optimal working dilution should be determined by the end user.</p>

Storage Buffer	In PBS, 150 mM NaCl, pH 7.4 (50% glycerol, 0.02% sodium azide).
Storage Instruction	Store at 4°C. For long term storage store at -20°C. Aliquot to avoid repeated freezing and thawing.
Note	This product contains sodium azide: a POISONOUS AND HAZARDOUS SUBSTANCE which should be handled by trained staff only.

Applications

- Western Blot (Tissue lysate)
Western Blot analysis of mouse spleen lysate.
- Immunohistochemistry (Formalin/PFA-fixed paraffin-embedded sections)
- Immunocytochemistry
- Immunofluorescence
- Flow Cytometry

Gene Info — SFRS1

Entrez GeneID	6426
Protein Accession#	Q07955
Gene Name	SFRS1
Gene Alias	ASF, MGC5228, SF2, SF2p33, SRp30a
Gene Description	splicing factor, arginine/serine-rich 1
Omim ID	600812
Gene Ontology	Hyperlink
Gene Summary	This gene encodes a member of the arginine/serine-rich splicing factor protein family, and functions in both constitutive and alternative pre-mRNA splicing. The protein binds to pre-mRNA transcripts and components of the spliceosome, and can either activate or repress splicing depending on the location of the pre-mRNA binding site. The protein's ability to activate splicing is regulated by phosphorylation and interactions with other splicing factor associated proteins. Multiple transcript variants encoding different isoforms have been found for this gene. [provided by RefSeq]

Other Designations

pre-mRNA-splicing factor SF2, P33 subunit|splicing factor 2
