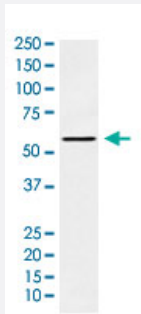


PAK1 monoclonal antibody, clone ADFA-16

Catalog # MAB22043 Size 100 uL

Applications



Western Blot (Cell lysate)

Western Blot (cell lysate) analysis of A-431 cell lysate.

Specification

Product Description	Rabbit monoclonal antibody raised against synthetic protein of human PAK1.
Immunogen	A synthetic peptide corresponding to human PAK1.
Host	Rabbit
Reactivity	Human, Mouse, Rat
Specificity	This antibody reacts with human, mouse, rat PAK1, in native form and recombinant. Superfamily members of PAK1 are not reactive to antibody.
Form	Liquid
Purification	Affinity purification
Isotype	IgG

Recommend Usage	Flow Cytometry (1:30) Immunohistochemistry (Formalin/PFA-fixed paraffin-embedded sections) (1:100-500) Immunofluorescence (1:50-200) Immunocytochemistry (1:50-200) Immunoprecipitation (1:40) Western Blot (1:500-2000) The optimal working dilution should be determined by the end user.
Storage Buffer	In PBS, 150 mM NaCl, pH 7.4 (50% glycerol, 0.02% sodium azide).
Storage Instruction	Store at 4°C. For long term storage store at -20°C. Aliquot to avoid repeated freezing and thawing.
Note	This product contains sodium azide: a POISONOUS AND HAZARDOUS SUBSTANCE which should be handled by trained staff only.

Applications

- Western Blot (Cell lysate)
Western Blot (cell lysate) analysis of A-431 cell lysate.
- Immunohistochemistry (Formalin/PFA-fixed paraffin-embedded sections)
- Immunocytochemistry
- Immunofluorescence
- Immunoprecipitation
- Flow Cytometry

Gene Info — PAK1

Entrez GeneID	5058
Protein Accession#	Q13153
Gene Name	PAK1
Gene Alias	MGC130000, MGC130001, PAKalpha
Gene Description	p21 protein (Cdc42/Rac)-activated kinase 1

Omim ID [602590](#)

Gene Ontology [Hyperlink](#)

Gene Summary PAK proteins are critical effectors that link RhoGTPases to cytoskeleton reorganization and nuclear signaling. PAK proteins, a family of serine/threonine p21-activating kinases, include PAK1, PAK2, PAK3 and PAK4. These proteins serve as targets for the small GTP binding proteins Cdc42 and Rac and have been implicated in a wide range of biological activities. PAK1 regulates cell motility and morphology. Alternatively spliced transcript variants encoding different isoforms have been found for this gene. [provided by RefSeq]

Other Designations STE20 homolog, yeast|p21-activated kinase 1|p21/Cdc42/Rac1-activated kinase 1 (STE20 homolog, yeast)|p21/Cdc42/Rac1-activated kinase 1 (yeast Ste20-related)

Pathway

- [Axon guidance](#)
- [Chemokine signaling pathway](#)
- [Epithelial cell signaling in Helicobacter pylori infection](#)
- [ErbB signaling pathway](#)
- [Fc gamma R-mediated phagocytosis](#)
- [Focal adhesion](#)
- [MAPK signaling pathway](#)
- [Natural killer cell mediated cytotoxicity](#)
- [Regulation of actin cytoskeleton](#)
- [Renal cell carcinoma](#)
- [T cell receptor signaling pathway](#)

Disease

- [Carcinoma](#)
- [Esophageal Neoplasms](#)
- [HIV Infections](#)
- [Tobacco Use Disorder](#)