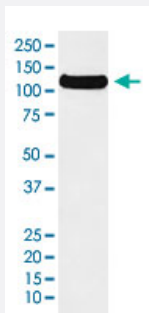


# DDB1 monoclonal antibody, clone AFAH-4

Catalog # MAB22019      Size 100 uL

## Applications



### Western Blot

Western Blot analysis of DDB1.

## Specification

**Product Description** Rabbit monoclonal antibody raised against synthetic protein of human DDB1.

**Immunogen** A synthetic peptide corresponding to human DDB1.

**Host** Rabbit

**Reactivity** Human, Mouse, Rat

**Form** Liquid

**Purification** Affinity purification

**Isotype** IgG

**Recommend Usage**  
 Immunoprecipitation (1:50)  
 Immunocytochemistry (1:50-200)  
 Immunofluorescence (1:50-200)  
 Western Blot (1:1000-5000)  
 The optimal working dilution should be determined by the end user.

**Storage Buffer** In PBS, 150 mM NaCl, pH 7.4 (50% glycerol, 0.02% sodium azide).

**Storage Instruction**

Store at 4°C. For long term storage store at -20°C.  
Aliquot to avoid repeated freezing and thawing.

**Note**

This product contains sodium azide: a POISONOUS AND HAZARDOUS SUBSTANCE which should be handled by trained staff only.

## Applications

- Western Blot

Western Blot analysis of DDB1.

- Immunocytochemistry

- Immunofluorescence

- Immunoprecipitation

## Gene Info — DDB1

**Entrez GeneID**[1642](#)**Protein Accession#**[Q16531](#)**Gene Name**

DDB1

**Gene Alias**

DDBA, UV-DDB1, XAP1, XPCE, XPE, XPE-BF

**Gene Description**

damage-specific DNA binding protein 1, 127kDa

**Omim ID**[600045](#)**Gene Ontology**[Hyperlink](#)**Gene Summary**

This gene encodes the large subunit of DNA damage-binding protein which is a heterodimer composed of a large and a small subunit. This protein functions in nucleotide-excision repair. Its defective activity causes the repair defect in the patients with xeroderma pigmentosum complementation group E (XPE). However, it remains for mutation analysis to demonstrate whether the defect in XPE patients is in this gene or the gene encoding the small subunit. In addition, Best vitelliform macular dystrophy is mapped to the same region as this gene on 11q, but no sequence alterations of this gene are demonstrated in Best disease patients. [provided by RefSeq]

**Other Designations**

DDB p127 subunit|damage-specific DNA binding protein 1|damage-specific DNA binding protein 1 (127kD)

## Pathway

- [Nucleotide excision repair](#)
- [Ubiquitin mediated proteolysis](#)