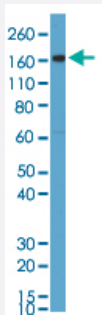


RecomAb™

CD163 monoclonal antibody, clone RM371

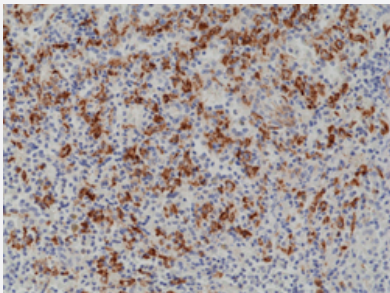
Catalog # MAB22003 Size 100 uL

Applications



Western Blot (Tissue lysate)

Western Blot (Tissue lysate) analysis of human placenta.



Immunohistochemistry (Formalin/PFA-fixed paraffin-embedded sections)

Immunohistochemical staining of human spleen.

Specification

Product Description	Rabbit recombinant monoclonal antibody raised against human CD163.
Antibody Species	Rabbit
Immunogen	Original antibody is raised against a synthetic peptide corresponding to N-terminus of human CD163.
Reactivity	Human
Specificity	This antibody reacts to human CD163.
Form	Liquid

Purification	Protein A purification
Isotype	IgG
Recommend Usage	Immunohistochemistry (Formalin/PFA-fixed paraffin-embedded sections) (1:500-1000) Western Blot (1:1000-2000) The optimal working dilution should be determined by the end user.
Storage Buffer	In PBS (50% glycerol, 1% BSA, 0.09% sodium azide)
Storage Instruction	Store at -20°C. Aliquot to avoid repeated freezing and thawing.
Note	This product contains sodium azide: a POISONOUS AND HAZARDOUS SUBSTANCE which should be handled by trained staff only.

Applications

- Western Blot (Tissue lysate)

Western Blot (Tissue lysate) analysis of human placenta.

- Immunohistochemistry (Formalin/PFA-fixed paraffin-embedded sections)

Immunohistochemical staining of human spleen.

Gene Info — CD163

Entrez GeneID	9332
Gene Name	CD163
Gene Alias	M130, MM130
Gene Description	CD163 molecule
Omim ID	605545
Gene Ontology	Hyperlink
Other Designations	CD163 antigen macrophage-associated antigen

Disease

- [Kidney Failure](#)

- [Tobacco Use Disorder](#)