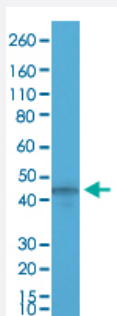


RecomAb™

# KRT19 monoclonal antibody, clone RM364

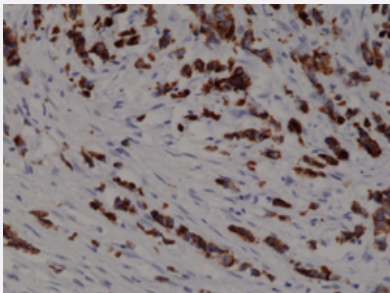
Catalog # MAB21996      Size 100 uL

## Applications



### Western Blot (Cell lysate)

Western Blot (Cell lysate) analysis of MCF-7 cell lysates.



### Immunohistochemistry (Formalin/PFA-fixed paraffin-embedded sections)

Immunohistochemical staining of human breast cancer.

## Specification

<b>Product Description</b>	Rabbit recombinant monoclonal antibody raised against human KRT19.
<b>Antibody Species</b>	Rabbit
<b>Immunogen</b>	Original antibody is raised against a synthetic peptide corresponding to C-terminus of human KRT19.
<b>Reactivity</b>	Human
<b>Specificity</b>	This antibody reacts to human cytokeratin-19.
<b>Form</b>	Liquid

Purification	Protein A purification
Isotype	IgG
Recommend Usage	Immunohistochemistry (Formalin/PFA-fixed paraffin-embedded sections) (1:500-1000) Western Blot (1:1000-2000) The optimal working dilution should be determined by the end user.
Storage Buffer	In PBS (50% glycerol, 1% BSA, 0.09% sodium azide)
Storage Instruction	Store at -20°C. Aliquot to avoid repeated freezing and thawing.
Note	This product contains sodium azide: a POISONOUS AND HAZARDOUS SUBSTANCE which should be handled by trained staff only.

## Applications

- Western Blot (Cell lysate)

Western Blot (Cell lysate) analysis of MCF-7 cell lysates.

- Immunohistochemistry (Formalin/PFA-fixed paraffin-embedded sections)

Immunohistochemical staining of human breast cancer.

## Gene Info — KRT19

Entrez GeneID	<a href="#">3880</a>
Gene Name	KRT19
Gene Alias	CK19, K19, K1CS, MGC15366
Gene Description	keratin 19
Omim ID	<a href="#">148020</a>
Gene Ontology	<a href="#">Hyperlink</a>
Gene Summary	The protein encoded by this gene is a member of the keratin family. The keratins are intermediate filament proteins responsible for the structural integrity of epithelial cells and are subdivided into cytokeratins and hair keratins. The type I cytokeratins consist of acidic proteins which are arranged in pairs of heterotypic keratin chains. Unlike its related family members, this smallest known acidic cytokeratin is not paired with a basic cytokeratin in epithelial cells. It is specifically expressed in the periderm, the transiently superficial layer that envelopes the developing epidermis. The type I cytokeratins are clustered in a region of chromosome 17q12-q21. [provided by RefSeq]

**Other Designations**

40-kDa keratin intermediate filament|cytokeratin 19|keratin, type I cytoskeletal 19|keratin, type I, 40-kd

**Disease**

- [Liver Cirrhosis](#)