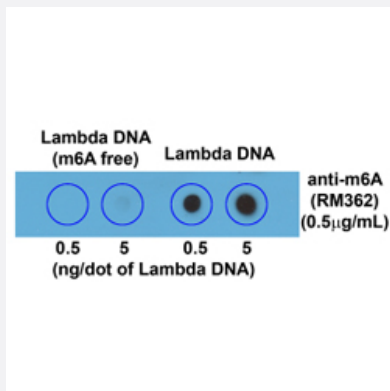


RecomAb™

N6-Methyladenosine monoclonal antibody, clone RM362

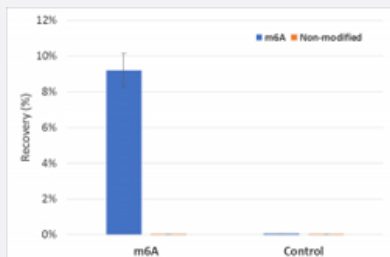
Catalog # MAB21995 Size 50 ug

Applications



Dot Blot (Peptide)

Dot Blot of Lambda DNA without or with m6A.



RIP Assay

MeRIP was performed using M6A and control RNA from NEB (E1610).

Specification

Product Description	Rabbit recombinant monoclonal antibody raised against N6-Methyladenosine.
Antibody Species	Rabbit
Immunogen	Original antibody is raised against BSA-conjugated N6-Methyladenosine.
Reactivity	Human
Specificity	This antibody reacts to N6-Methyladenosine (m6A) in both RNA and DNA. No cross reactivity with no n-methylated adenosine.

Form	Liquid
Purification	Protein A purification
Isotype	IgG
Recommend Usage	Dot Blot (0.5 ug/mL-2 ug/mL) ELISA (0.1 ug/mL-3 ug/mL) MeRIP (0.2 ug/mL-5 ug/mL) The optimal working dilution should be determined by the end user.
Storage Buffer	In PBS (50% glycerol, 1% BSA, 0.09% sodium azide)
Storage Instruction	Store at -20°C. Aliquot to avoid repeated freezing and thawing.
Note	This product contains sodium azide: a POISONOUS AND HAZARDOUS SUBSTANCE which should be handled by trained staff only.

Applications

- Enzyme-linked Immunoabsorbent Assay

- Dot Blot (Peptide)

Dot Blot of Lambda DNA without or with m6A.

- RIP Assay

MeRIP was performed using M6A and control RNA from NEB (E1610).