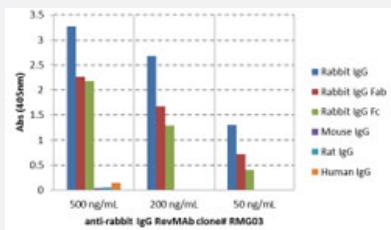


RecomAb™

Rabbit IgG monoclonal antibody, clone RMG03

Catalog # MAB21963 Size 100 ug

Applications



Enzyme-linked Immunoabsorbent Assay

ELISA analysis of IgGs from different species shows clone RMG03 reacts only to rabbit IgG, no cross reactivity with human IgG, rat IgG, or mouse IgG.

Specification

Product Description	Goat recombinant monoclonal antibody raised against rabbit IgG.
Antibody Species	Goat
Immunogen	Original antibody is raised against rabbit IgG.
Reactivity	Rat
Specificity	This antibody reacts to Rabbit IgG. No cross reactivity with human IgG, rat IgG, or mouse IgG.
Form	Liquid
Purification	Protein G purification
Isotype	IgG
Recommend Usage	ELISA (0.01 ug/mL-0.5 ug/mL) Immunocytochemistry (0.5 ug/mL-2 ug/mL) Immunohistochemistry (0.5 ug/mL-2 ug/mL) Western Blot (0.1 ug/mL-0.5 ug/mL) The optimal working dilution should be determined by the end user.

Storage Buffer	In PBS (50% glycerol, 1% BSA, 0.09% sodium azide)
Storage Instruction	Store at -20°C. Aliquot to avoid repeated freezing and thawing.
Note	This product contains sodium azide: a POISONOUS AND HAZARDOUS SUBSTANCE which should be handled by trained staff only.

Applications

- Western Blot
- Immunohistochemistry
- Immunocytochemistry
- Enzyme-linked Immunoabsorbent Assay

ELISA analysis of IgGs from different species shows clone RMG03 reacts only to rabbit IgG, no cross reactivity with human IgG, rat IgG, or mouse IgG.