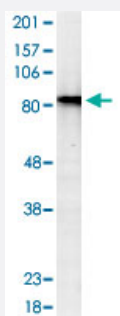


# HSP90AA1 monoclonal antibody, clone 2G5.G3

Catalog # MAB2186

Size 100 ug

## Applications



### Western Blot (Tissue lysate)

HSP90AA1 monoclonal antibody, clone 2G5.G3 (Cat # MAB2186) were tested by one of our collaborators on a rat tissue lysate. This lysate was prepared from a mix of the following male and female rat tissues: brain, heart, kidney, liver, lung, ovary. Sample applied to the gel was 10-20 ug/lane.

## Specification

**Product Description** Mouse monoclonal antibody raised against HSP90AA1.

**Immunogen** Human HSP90AA1.

**Host** Mouse

**Reactivity** Human, Mouse, Rat

**Specificity** It does not cross-react with Hsp90beta in ELISA.

**Form** Liquid

**Isotype** IgG1

**Quality Control Testing** Antibody Reactive Against HSP90AA1.

**Recommend Usage** Western Blot (0.5-1 ug/mL)  
The optimal working dilution should be determined by the end user.

**Storage Buffer** In PBS, pH 7.4

**Storage Instruction** Store at -20°C.  
Aliquot to avoid repeated freezing and thawing.

## Applications

- Western Blot (Tissue lysate)

HSP90AA1 monoclonal antibody, clone 2G5.G3 (Cat # MAB2186) were tested by one of our collaborators on a rat tissue lysate. This lysate was prepared from a mix of the following male and female rat tissues: brain, heart, kidney, liver, lung, ovary. Sample applied to the gel was 10-20 ug/lane.

- Immunohistochemistry

- Immunocytochemistry

- Immunoprecipitation

- Enzyme-linked Immunoabsorbent Assay

## Gene Info — HSP90AA1

Entrez GeneID	<a href="#">3320</a>
Gene Name	HSP90AA1
Gene Alias	FLJ31884, HSP86, HSP89A, HSP90A, HSP90N, HSPC1, HSPCA, HSPCAL1, HSPCAL4, HSPN, Hsp89, Hsp90, LAP2
Gene Description	heat shock protein 90kDa alpha (cytosolic), class A member 1
Omim ID	<a href="#">140571</a>
Gene Ontology	<a href="#">Hyperlink</a>
Gene Summary	HSP90 proteins are highly conserved molecular chaperones that have key roles in signal transduction, protein folding, protein degradation, and morphologic evolution. HSP90 proteins normally associate with other cochaperones and play important roles in folding newly synthesized proteins or stabilizing and refolding denatured proteins after stress. There are 2 major cytosolic HSP90 proteins, HSP90AA1, an inducible form, and HSP90AB1 (MIM 140572), a constitutive form. Other HSP90 proteins are found in endoplasmic reticulum (HSP90B1; MIM 191175) and mitochondria (TRAP1; MIM 606219) (Chen et al., 2005 [PubMed 16269234]).[supplied by OMIM]
Other Designations	heat shock 90kD protein 1, alpha heat shock 90kD protein 1, alpha-like 4 heat shock 90kD protein, alpha-like 4 heat shock 90kDa protein 1, alpha

## Pathway

- [Antigen processing and presentation](#)
- [Pathways in cancer](#)
- [Prostate cancer](#)

## Disease

- [Asthma](#)
- [Cardiovascular Diseases](#)
- [Cleft Lip](#)
- [Cleft Palate](#)
- [Diabetes Mellitus](#)
- [Edema](#)