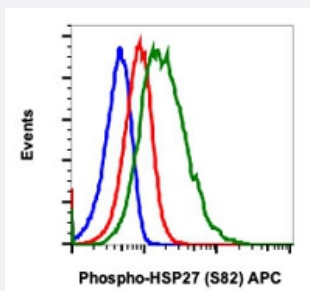


# HSPB1 (phospho S82) monoclonal antibody, clone CB2 (APC)

Catalog # MAB21649      Size 100 Reactions

## Applications



### Flow Cytometry

Flow cytometric analysis of HeLa cells with HSPB1 (phospho S82) monoclonal antibody, clone CB2 (APC) (Cat # MAB21649). Unstained and untreated cells as as negative control (blue) or untreated (red) or treated with UV and TPA (green).

## Specification

<b>Product Description</b>	Rabbit monoclonal antibody raised against synthetic phosphopeptide of human HSPB1.
<b>Immunogen</b>	A synthetic phosphopeptide corresponding to residues surrounding S82 of human HSPB1.
<b>Host</b>	Rabbit
<b>Reactivity</b>	Human
<b>Form</b>	Liquid
<b>Conjugation</b>	APC
<b>Purification</b>	Protein A/G purification
<b>Isotype</b>	IgG1, kappa
<b>Recommend Usage</b>	Flow Cytometry (5 $\mu$ L/ $10^6$ cells) The optimal working dilution should be determined by the end user.
<b>Storage Buffer</b>	In PBS, pH 7.4 (0.2% BSA, 0.09% sodium azide).
<b>Storage Instruction</b>	Store at 4°C.

## Note

This product contains sodium azide: a POISONOUS AND HAZARDOUS SUBSTANCE which should be handled by trained staff only.

## Applications

- Flow Cytometry

Flow cytometric analysis of HeLa cells with HSPB1 (phospho S82) monoclonal antibody, clone CB2 (APC) (Cat # MAB21649). Unstained and untreated cells as negative control (blue) or untreated (red) or treated with UV and TPA (green).

## Gene Info — HSPB1

Entrez GeneID [3315](#)

Protein Accession# [P04792](#)

Gene Name HSPB1

Gene Alias CMT2F, DKFZp586P1322, HMN2B, HS.76067, HSP27, HSP28, Hsp25, SRP27

Gene Description heat shock 27kDa protein 1

Omim ID [602195](#) [606595](#) [608634](#)

Gene Ontology [Hyperlink](#)

**Gene Summary** The protein encoded by this gene is induced by environmental stress and developmental changes. The encoded protein is involved in stress resistance and actin organization and translocates from the cytoplasm to the nucleus upon stress induction. Defects in this gene are a cause of Charcot-Marie-Tooth disease type 2F (CMT2F) and distal hereditary motor neuropathy (dHMN). [provided by RefSeq]

**Other Designations** OTTHUMP00000024846|estrogen-regulated 24 kDa protein|heat shock 27kD protein 1|heat shock protein beta-1|stress-responsive protein 27

## Pathway

- [MAPK signaling pathway](#)
- [VEGF signaling pathway](#)

## Disease

- [Adenocarcinoma](#)
- [Carcinoma](#)
- [Charcot-Marie-Tooth Disease](#)
- [Diabetic Nephropathies](#)
- [Genetic Predisposition to Disease](#)
- [Lung Neoplasms](#)
- [Small Cell Lung Carcinoma](#)